



MOX Fuel Fabrication Facility Progress Overview

March 2010

-
- Baseline Total Project Cost - \$4.86 billion
 - Project is 41% complete overall
 - Facility construction is 24% complete
 - Process Building construction continues on schedule
 - Installation quantities to date are
 - 69,335 cu. yds. of high strength concrete (40%)
 - 12,602 tons of reinforcing steel (31%)
 - Project safety
 - Recently reached 3,000,000 continuous safe work hours without a lost time accident

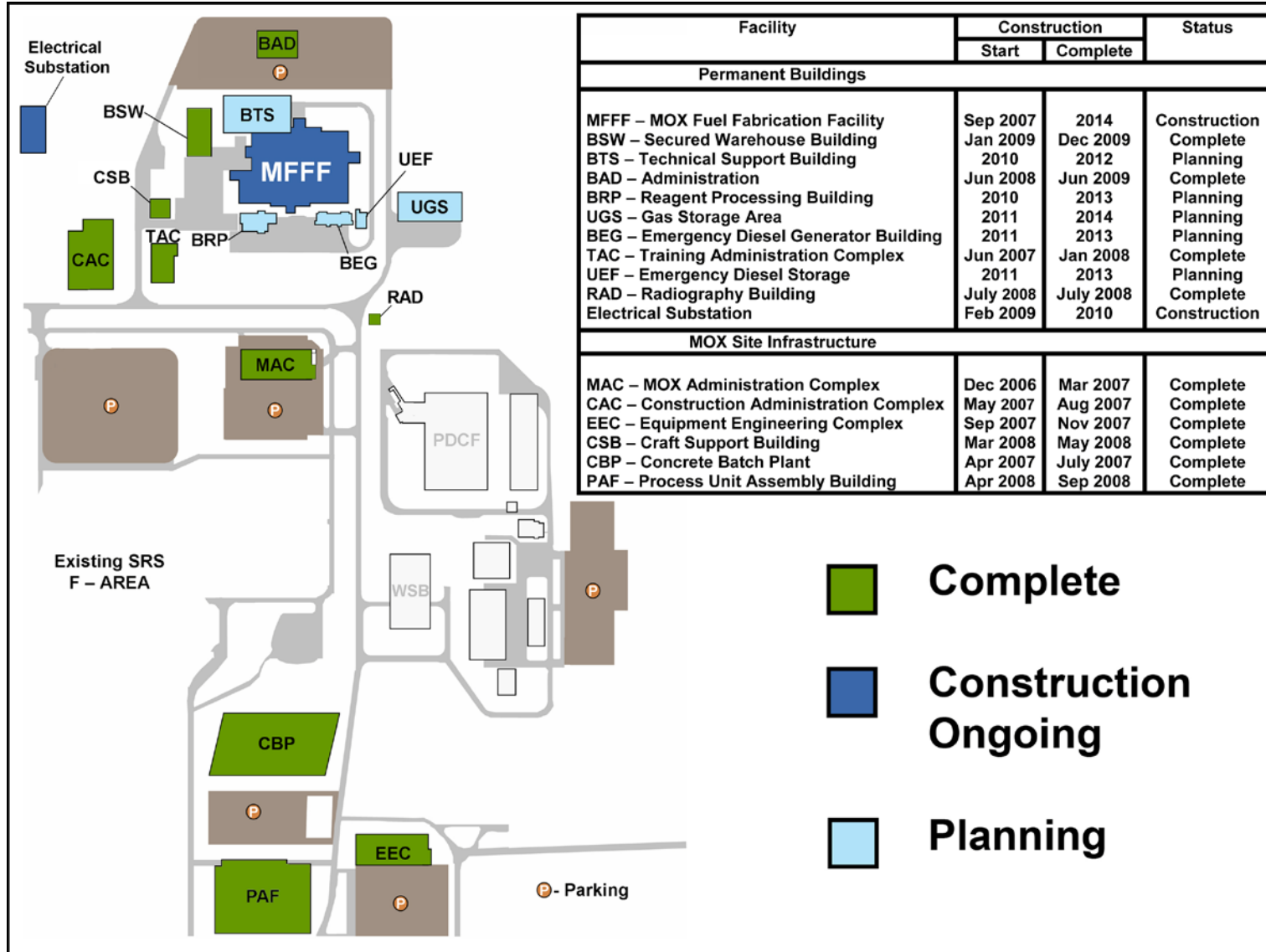


Project Performance Summary



-
- Overall project is on schedule and within costs
 - Secure Warehouse is complete
 - Construction progressing on Electrical Substation
 - Ten of 17 project facilities have been completed
 - Long Lead process tanks and equipment continue to be delivered to SRS. First process gloveboxes tested
 - Project staffing levels
 - 1,840 direct at SRS
 - 2,600 at vendors

Facility Location and Status





NRC Assessment Results



-
- The NRC staff's review of the MFFF License Application and Integrated Safety Analysis is complete and their Safety Evaluation Report is scheduled to be issued in December 2010
 - In their FY2009 assessment of MOX Services' performance, the NRC concluded: "...MFFF construction activities were conducted in an acceptable manner, and the construction program was sufficiently implemented to support ongoing construction activities."

Upcoming Milestones

- Begin process piping installation in Process Building June 2010
- Begin Heating, Ventilation, & Air Conditioning installation in Process Building July 2010
- Start Technical Support Bldg Construction July 2010
- Complete MOX Process Glovebox Design Sep 2010

Construction Photos



MOX Construction Site March 2010

Construction Photos



MFFF Looking South East - March 2010

Construction Photos



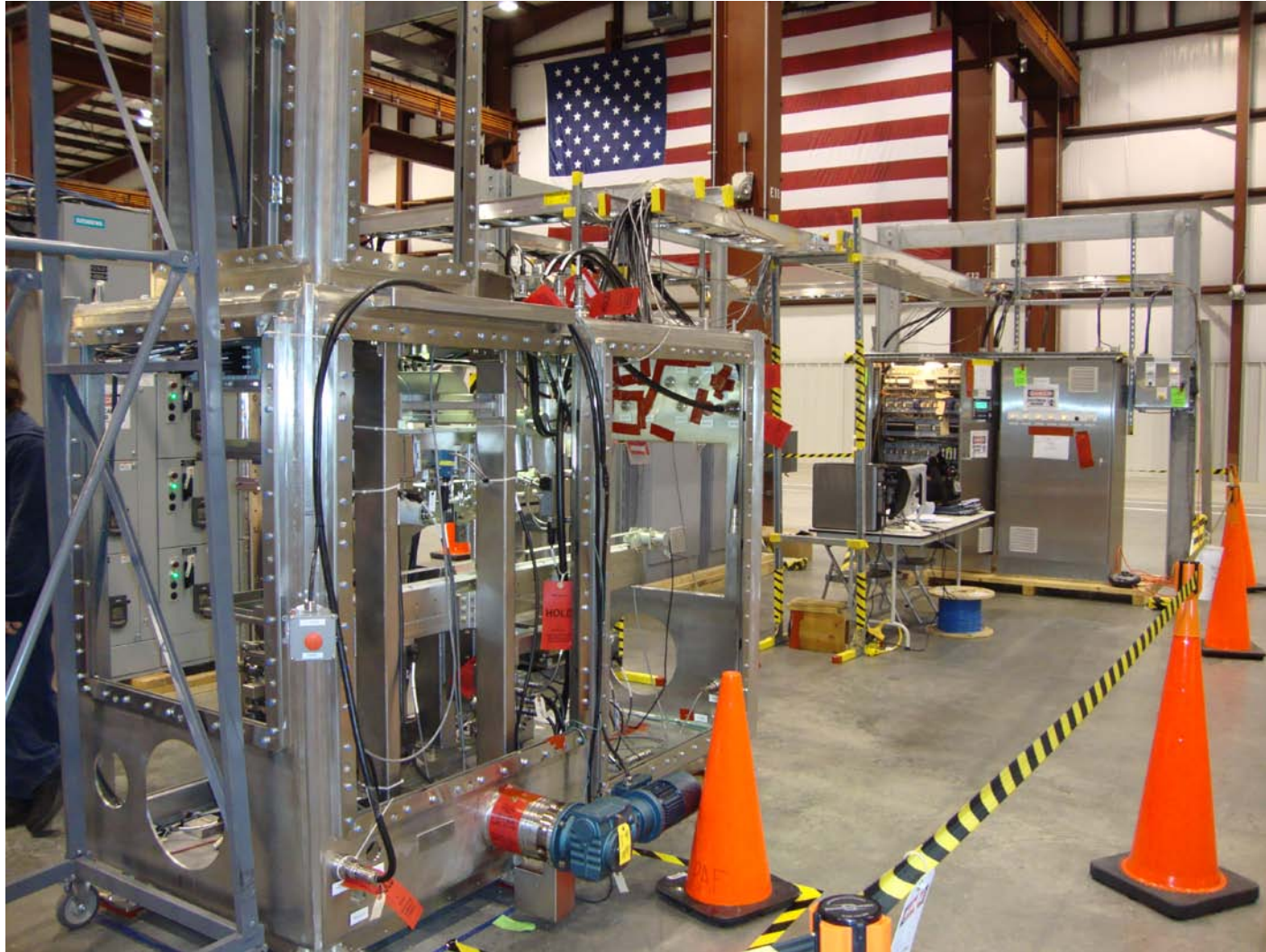
MFFF Secure Warehouse

Construction Photos



Concrete Placement in Fuel Manufacturing

Construction Photos



First Gloveboxes Tested in Process Assembly Facility

Waste Solidification Building Progress Overview

March 2010

Project Performance Summary

- Baseline Total Project Cost - \$344.5 M
- Project is 33% complete overall
 - Facility construction is 20% complete
- Construction to complete in June 2012
- Facility will startup in September 2013 to support MFFF testing

Construction Photos



WSB, March 2010

Construction Photos



First Basemat Placement

Construction Photos



First Basemat Placement

Construction Photos



Process Glovebox at Vendor

Construction Photos



Ventilation HEPA Filter Housing at Vendor



MOX/WSB Construction Site March 2010