

# Governor's Nuclear Advisory Committee: Columbia Site Update

Ed Wills, Director – Environmental, Health & Safety

Courtney Boone, Vice President – Global Communications

October 17, 2019

# Agenda

- Consent Agreement Update
- Sealand Storage Container Offloading
- Community Engagement Update
- Workforce Planning

# Westinghouse - DHEC Consent Agreement

- Remedial Investigation approved by DHEC in June 2019
- Actions completed to further develop the Conceptual Site Model (CSM)
  - 29 new permanent wells
  - 11+ lithologic soil borings
  - 56 soil samples
  - 18 sediment samples
  - 13 surface water samples
  - Bathymetric surveys
  - Staff gauge installation
  - Additional flood plain assessment
  - Southern Storage Area intermodal container (“sealand”) investigation
  - East lagoon sludge sampling with DHEC split sampling
- Submitted annual groundwater report with sample results and analysis of existing 61 wells

## Westinghouse - DHEC Consent Agreement (cont.)

- Actions in process to further develop the CSM
  - Sampling of all 90 wells
  - Private water well survey
  - Phase 1 remedial investigation final report
  - Development of Phase 2 investigation
  - Development of East Lagoon closure plan
  - Continued Sealand offloading and removal from site in the Southern Storage Area Operable Unit





# Site Conceptual Model Block Diagram – Known Spills

\*2.5X Vertical Exaggeration

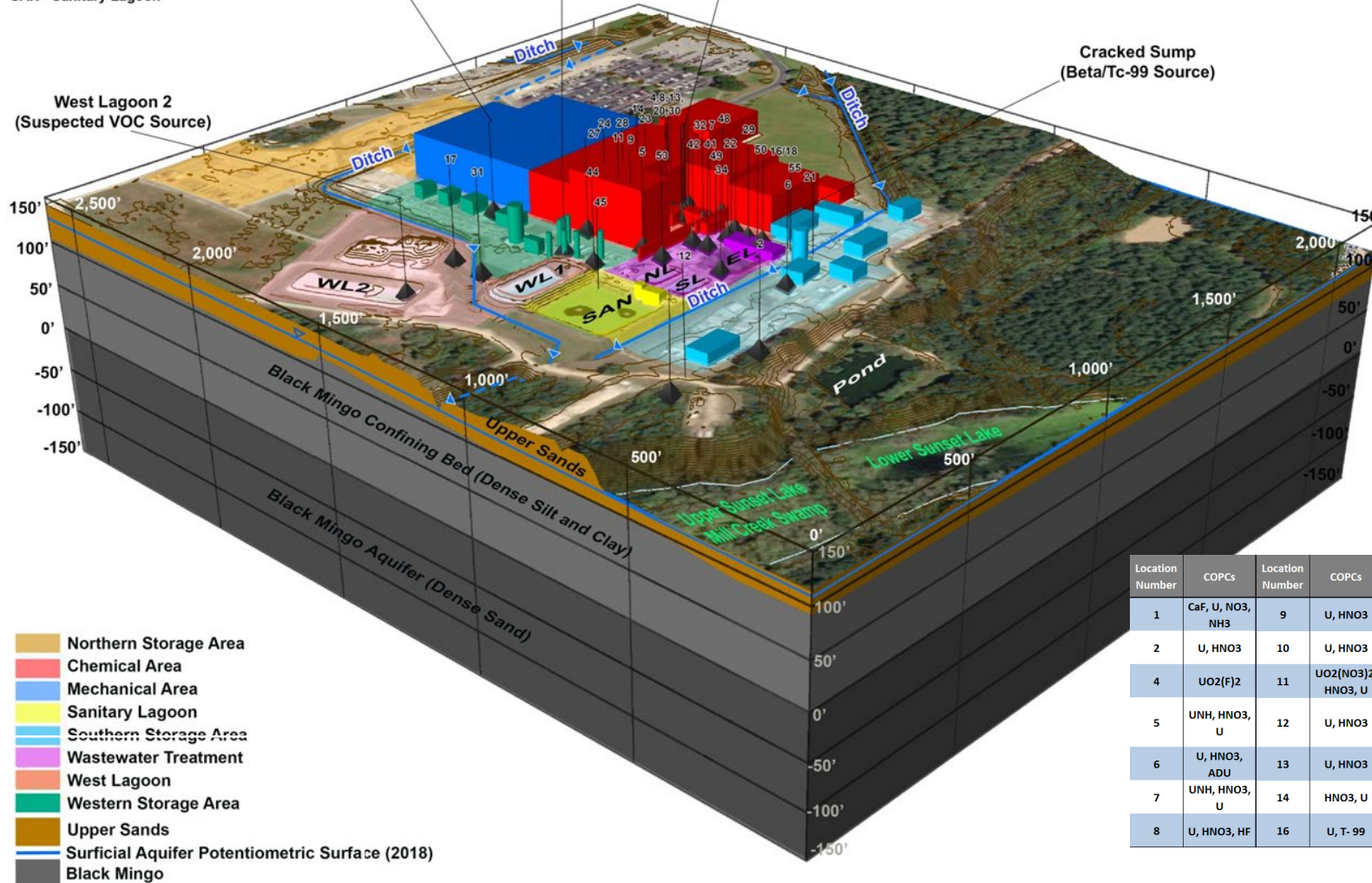
EL - East Lagoon  
 NL - North Lagoon  
 SL - South Lagoon  
 WL1 - West Lagoon 1  
 WL2 - West Lagoon 2  
 SAN - Sanitary Lagoon

Former Oil House  
 (Potential VOC Source)

PCE Storage Locations  
 (Potential VOC Source)

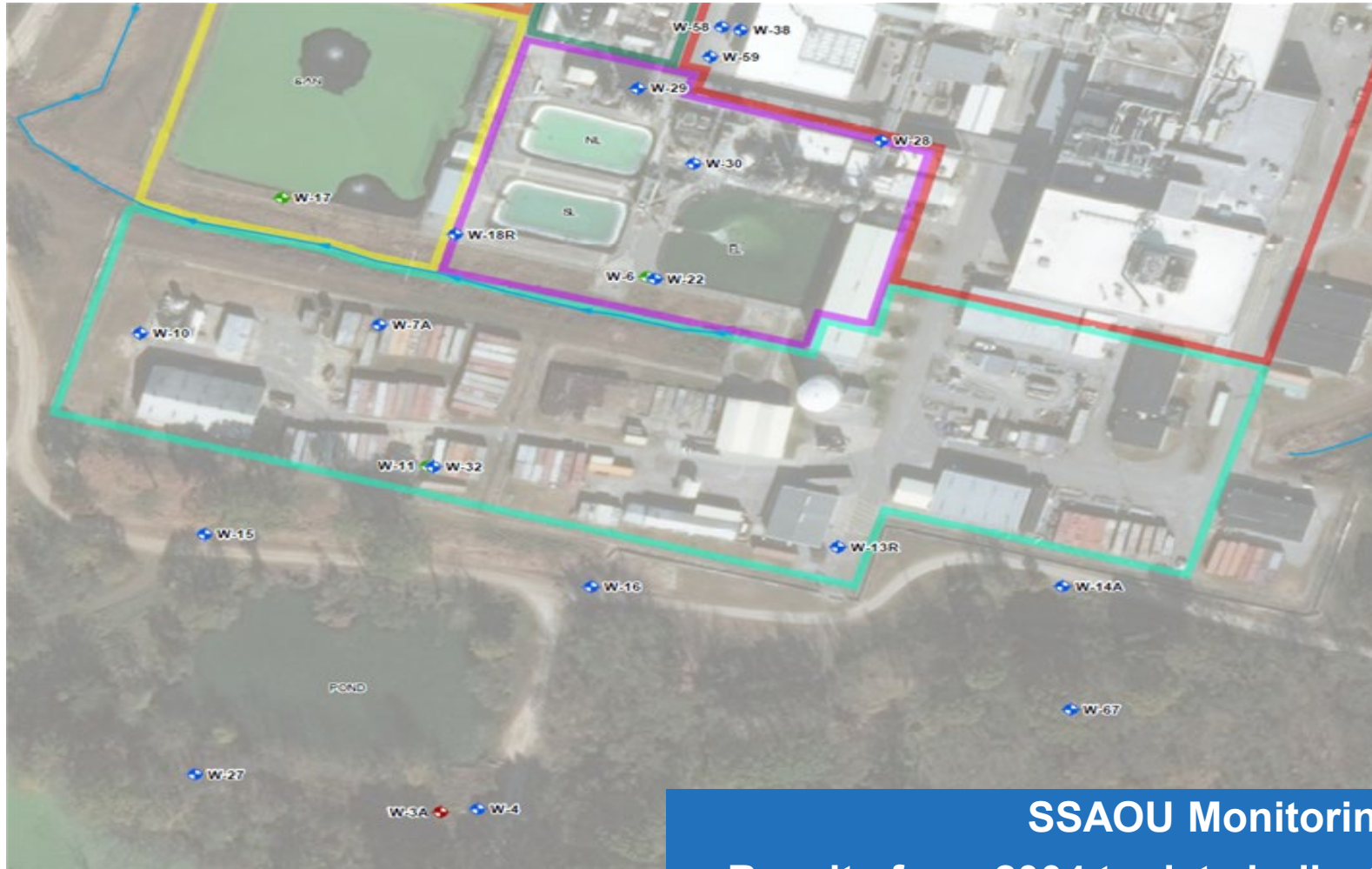
Uranyl Nitrate Spiking Station  
 (Alpha/Uranium Source:  
 10,19,26,35,47,52,54)

Cracked Sump  
 (Beta/Tc-99 Source)



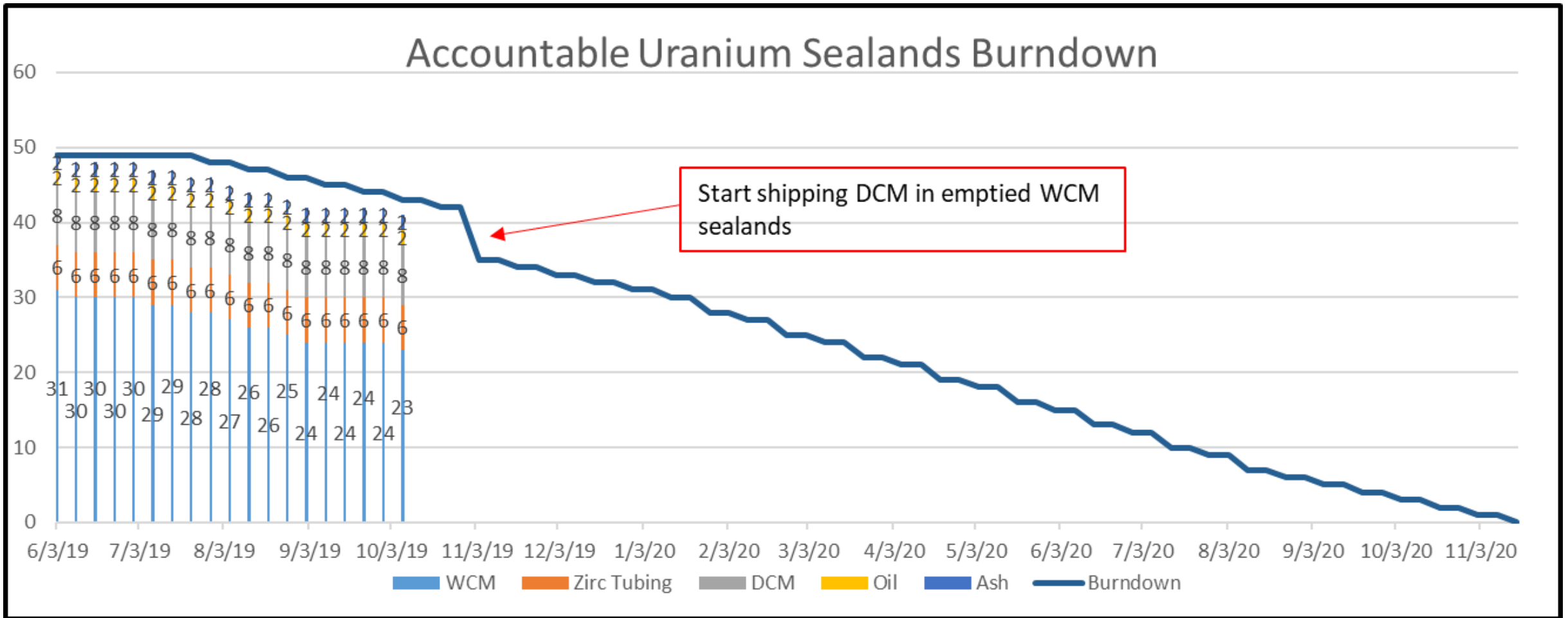
Location Number	COPCs	Location Number	COPCs	Location Number	COPCs	Location Number	COPCs	Location Number	COPCs	Location Number	COPCs
1	CaF, U, NO3, NH3	9	U, HNO3	17	U, NH3	24	U, HNO3, HF, PCE	32	U, HF	48	HF, U,
2	U, HNO3	10	U, HNO3	18	U, T-99	26	UNH, HNO3, U	34	U	49	U
4	UO2(F)2	11	UO2(NO3)2, HNO3, U	19	UO2(NO3)2, HNO3, U	27	U, HNO3	35	UNH, HNO3	50	U
5	UNH, HNO3, U	12	U, HNO3	20	HF, UO2(NO3)2, HNO3, U, F	28	U, T-99	41	U, HNO3	52c, 18c&46c	UNH, HNO3, U
6	U, HNO3, ADU	13	U, HNO3	21	U, T-99	29		42	U	53	U
7	UNH, HNO3, U	14	HNO3, U	22	U, NH3	30	U, HNO3	44	Gasoline, U, Fuel Oil	54	UNH, HNO3, U
8	U, HNO3, HF	16	U, T-99	23	U	31	U	47	UO2(NO3)2, HNO3, U	55	U, Tc-99

# Sealands Groundwater Monitoring



**SSAOU Monitoring:**  
Results from 2004 to date indicate that intermodal storage has not impacted groundwater

# Sealand Container Offloading Program





# Improved Communications & Community Engagement

## NRC Communications:

- Public Meetings

## DHEC Interactions:

- Public Meetings
- Consent Agreement Progress Reports
- DHEC Weekly Calls
- Communications Protocol

## Key Stakeholders Engagement:

- Governors Nuclear Advisory Committee
- Engaging local political leaders
- Lower Richland Community Advisory Council (LRCAC)
- Routine engagement with local emergency response organizations
- Local community schools engagement
- South Carolina State University



# Improved Communications & Community Engagement – New and Upcoming Items

**COLUMBIA FACTS & INFORMATION**

Westinghouse Electric Company is a leading global supplier of safe and innovative nuclear technology. We provide our utility customers around the world with reliable and dependable nuclear power plants, nuclear fuel, plant automation and operating plant products and services. We are driven by our powerful history and experience, groundbreaking ideas, focus on safety and sustainability, and our strong team of approximately 9,000 employees around the world.

**50 YEARS OF WESTINGHOUSE IN SOUTH CAROLINA**

**1,100 EMPLOYEES**

**ABOUT 10 PERCENT OF U.S. ELECTRICITY COMES FROM NUCLEAR FUEL MANUFACTURED BY WESTINGHOUSE IN SOUTH CAROLINA**

Westinghouse has a long history of operations in South Carolina - dating back to the 1969 opening of the Westinghouse Columbia Fuel Fabricating Facility (CFFF) in Hopkins. Just outside of Columbia. Today, CFFF is one of the largest facilities of its kind in the world.

The site houses fuel manufacturing facilities, product engineering and testing laboratories, as well as fuel marketing and contract administration. It covers 1,155 acres that include 550,000 square feet of manufacturing and office space.

Nuclear power plants produce about 20 percent of electricity generated in the U.S. About 10 percent of U.S. electricity comes from nuclear fuel manufactured by Westinghouse at CFFF.

From our beginning, when the first fuel components were produced and shipped from CFFF, we have created a legacy of quality performance and products. Westinghouse is committed safety, quality and meeting customer needs and expectations as we strive to be the industry's most responsive supplier of flawless, value-added fuel products and services.

**Additional Resources**

- Westinghouse in the Community  
[Read More](#)
- Upcoming Public Meetings  
[Read More](#)
- Nuclear Regulatory Commission (NRC) and Westinghouse  
[Read More](#)
- South Carolina Department of Health and Environmental Control (DHEC) and Westinghouse  
[Read More](#)

**Westinghouse**  
©2019 Westinghouse Electric Company LLC. All rights reserved.

- **Columbia Fuel Fabricating Facility Website**
  - Source of publicly available information for ease of use
  - Directly addresses requests from the community
  - <http://www.westinghousenuclear.com/columbiacommunity>
- **Westinghouse Community Stakeholder Committee**
  - Modeled after other site stakeholder committees
  - Will include Hopkins stakeholders
  - To be established by year-end 2019
- **Dedicated Communications and Community Resource**
  - to have a single point of contact and continuous engagement
  - Located at the plant in Hopkins