

ELECTRICAL LEGEND

ELECTRICAL

- E1 ELECTRICAL SYMBOL LEGEND & GENERAL NOTES
- E2 ELECTRICAL SITE PLAN
- E3 ELECTRICAL RISER DIAGRAM
- E4 ELECTRICAL - FIRST FLOOR PLAN
- E5 ELECTRICAL - SECOND FLOOR PLAN
- E6 LIGHTING - FIRST FLOOR PLAN
- E7 LIGHTING - SECOND FLOOR PLAN
- E8 ELECTRICAL SCHEDULES
- E9 ELECTRICAL SCHEDULES
- E10 COMMUNICATIONS - FIRST FLOOR PLAN
- E11 COMMUNICATIONS - SECOND FLOOR PLAN
- E12 ELECTRICAL DETAILS
- E13 ELECTRICAL DETAILS & SCHEDULES

GENERAL NOTES

1. ELECTRICAL LAYOUT DRAWINGS ARE PARTIALLY DIAGRAMMATIC, REFER TO ARCHITECTURAL, STRUCTURAL AND MECHANICAL DRAWINGS FOR GUIDANCE ON DIMENSIONS, CEILING HEIGHTS, DOOR SWINGS, ROOM FINISHES, STRUCTURAL AND ARCHITECTURAL DETAILS, LOCATIONS OF DUCTS, PIPES, AND STRUCTURAL STEEL. INSTALL THE ELECTRICAL SYSTEMS WITHOUT INTERFERING WITH DUCTS, PIPES, STRUCTURAL STEEL OR OTHER SYSTEMS. LOCATE LIGHTING FIXTURES SYMMETRICALLY IN THE PROPER RELATION TO FINISHED AREAS EXCEPT WHERE DIMENSIONED ON THE DRAWINGS OR LOCATED ON REFLECTED CEILING PLANS.
2. PROVIDE ADDITIONAL SUPPORTS FOR SWITCHES, STARTERS, RACEWAYS, AND OTHER ELECTRICAL EQUIPMENT WHEREVER THE BUILDING STRUCTURE IS NOT SUITABLE FOR DIRECT MOUNTING.
3. CONNECT BRANCH CIRCUIT NEUTRAL TO RECEPTACLE TERMINAL BY MEANS OF A SHORT "PIGTAIL" PERMANENTLY SPLICED TO THE NEUTRAL ON FEED-THRU CIRCUITS.
4. MOUNT GROUPED DEVICES IN A SINGLE CONTINUOUS GANG BOX; USE PARTITIONS WHERE VOLTAGE BETWEEN EXPOSED LIVE PARTS OF ADJACENT SWITCHES MAY EXCEED 300 VOLTS.
5. VERIFY CEILING SUSPENSION SYSTEMS IN ALL AREAS AND PROVIDE THE PROPER MOUNTING ACCESSORIES, TRIMS, ETC. TO SUIT EACH CEILING SYSTEM.
6. WHERE CONDUIT AND WIRING HAS NOT BEEN SHOWN ON THE DRAWINGS THE ARRANGEMENT AND ROUTING OF LIGHTING AND RECEPTACLE BRANCH CIRCUITS WILL BE AT THE CONTRACTOR'S DISCRETION IN ACCORDANCE WITH GENERALLY ACCEPTED GOOD PRACTICE FOR ELECTRICAL WORK, NATIONAL ELECTRICAL CODE REQUIREMENTS, LOCAL ORDINANCES AND THE FOLLOWING LIMITATIONS:
 - A. LIMIT LIGHTING AND RECEPTACLE BRANCH CIRCUIT HOMERUNS TO 5 CONDUCTORS: 3 PHASE WIRES, 1 NEUTRAL AND 1 GROUND.
 - B. INSTALL A COMMON NEUTRAL IN A HOMERUN FOR 2 OR 3 BRANCH CIRCUITS PROVIDING THE PHASE CONDUCTORS ARE OF DIFFERENT POLARITY.
 - C. BRANCH CIRCUIT AND FEEDER CONDUIT SHALL BE ROUTED OVERHEAD EXCEPT WHERE THE BUILDING DESIGN MAKES THIS ROUTING IMPRACTICABLE OR UNLESS NOTED OTHERWISE.
7. PROVIDE SEAL FITTINGS IN CONDUITS THAT ENTER CONDITIONED AREAS FROM NON-CONDITIONED AREAS.
8. OUTLETS THAT OCCUR ON OPPOSITE SIDES OF A COMMON WALL SHALL BE OFFSET A MINIMUM OF 6".

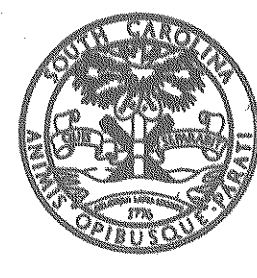
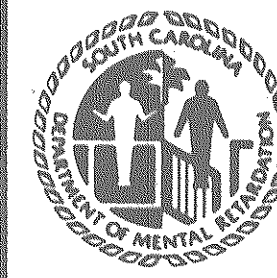
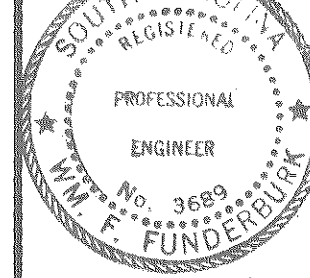
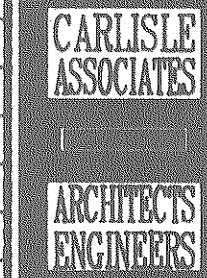
<p>□ 2'x 4' FLUORESCENT TROFFER LIGHTING FIXTURE (TYPE & CKT. NO. AS INDICATED, TYP.)</p> <p>□ 1'x4' FLUORESCENT TROFFER LIGHTING FIXTURE (TYPE & CKT. NO. AS INDICATED, TYP.)</p> <p>□ FLUORESCENT LIGHTING FIXTURE WITH EMERGENCY BATTERY PACK</p> <p>□ 4' INDUSTRIAL OR STRIP LIGHTING FIXTURE</p> <p>□ 8' INDUSTRIAL OR STRIP LIGHTING FIXTURE</p> <p>● EXIT SIGN, CEILING MOUNTED</p> <p>● EXIT SIGN, SURFACE WALL MOUNTED</p> <p>○ ROUND CEILING MOUNTED LIGHT FIXTURE</p> <p>□ FLUORESCENT LIGHTING FIXTURE, WALL MOUNTED</p> <p>○ INCANDESCENT OR H.I.D. LIGHTING FIXTURE, WALL MOUNTED</p> <p>○ POLE MOUNTED LIGHT FIXTURE</p> <p>○ BOLLARD LIGHT FIXTURE</p> <p>□ AREA LIGHT FIXTURE, POLE MOUNTED WITH ARM</p> <p>□ GANGED SWITCHES FOR THREE LEVEL LIGHTING, ONE SWITCH CONTROLS INNER LAMP(S) & ONE SWITCH CONTROLS OUTER LAMPS OF FIXTURES</p> <p>§ SINGLE POLE, SINGLE THROW SWITCH, MOUNTED 48" AFF</p> <p>§₂ TWO POLE, SINGLE THROW SWITCH, MTD. 48" AFF</p> <p>§₃ THREE WAY SWITCH, MOUNTED 48" AFF</p> <p>§₄ FOUR WAY SWITCH, MOUNTED 48" AFF</p> <p>§_K KEY OPERATED SWITCH, MOUNTED 48" AFF</p> <p>§_P SINGLE POLE SWITCH WITH PILOT LIGHT, MOUNTED 48" AFF</p> <p>D DIMMER SWITCH, MOUNTED 48" AFF</p> <p>□ MANUAL MOTOR STARTER</p>	<p>● 20 AMP DUPLEX RECEPTACLE, MOUNTED 18" AFF (CKT. NO. AS INDICATED, TYP.)</p> <p>● 20 AMP DUPLEX RECEPTACLE, MOUNTED 42" AFF OR 8" ABOVE COUNTER (W = WEATHERPROOF, G = GROUND FAULT)</p> <p>● 20 AMP QUADRUPLX RECEPTACLE 18" AFF</p> <p>● 20 AMP QUADRUPLX RECEPTACLE 42" AFF</p> <p>○ SINGLE RECEPTACLE MOUNTED BEHIND EQUIPMENT</p> <p>● FLOOR MOUNTED RECEPTACLE, POWER ONLY</p> <p>● FLOOR MOUNTED RECEPTACLE, POWER, COMPUTER, AND TELEPHONE</p> <p>□ P POWER POLE</p> <p>● 220 VOLT RECEPTACLE, MOUNTED 18" AFF</p> <p>● 220 VOLT RECEPTACLE, MOUNTED 42" AFF</p> <p>● RECEPTACLE FOR CONDENSATE PUMP</p> <p>▷ TELEPHONE OUTLET, MOUNTED 18" AFF</p> <p>▷ TELEPHONE OUTLET, MOUNTED 54" AFF</p> <p>▷ COMPUTER DATA OUTLET, MOUNTED 18" AFF</p> <p>■ STEEL CITY #FLOOR BOX WITH #664 CST GRAY TOP AND 664 RP RECEPT. FACE PLATE.</p>	<p>□ JUNCTION BOX, WALL MOUNTED</p> <p>○ JUNCTION BOX, CEILING MOUNTED</p> <p>□ CONTACTOR</p> <p>■ SURFACE MOUNTED PANELBOARD</p> <p>■ FLUSH MOUNTED PANELBOARD</p> <p>— TELEPHONE BOARD</p> <p>● PHOTOELECTRIC CELL (AIM EYE TO NORTH)</p> <p>□ TRANSFORMER</p> <p>○ SMOKE DETECTOR, CEILING MOUNTED</p> <p>○ HEAT DETECTOR, CEILING MOUNTED</p> <p>○ DUCT MOUNTED SMOKE DETECTOR</p> <p>○ FLOW SWITCH</p> <p>○ TAMPER SWITCH</p> <p>□ PULL STATION, MOUNTED 48" AFF</p> <p>□ SINGLE PROJECTION AUDIO-VISUAL FIRE ALARM HORN, MOUNTED 90" AFF</p> <p>□ DOUBLE PROJECTION AUDIO-VISUAL FIRE ALARM HORN, MOUNTED 90" AFF</p> <p>□ FIRE ALARM CONTROL PANEL</p> <p>□ FIRE ALARM GRAPHIC MONITOR</p>	<p>● GROUND ROD</p> <p>○ LIGHTNING TERMINAL WITH LOOP WIRE</p> <p>○ NEW POLE WITH OVERHEAD LINES</p> <p>□ HH HANDHOLE</p> <p>□ PAD MOUNTED TRANSFORMER</p> <p>□ EXHAUST FAN</p> <p>○ ELECTRICAL MOTOR (HORSEPOWER AS INDICATED)</p> <p>□ DISCONNECT SWITCH. SEE SCHEDULE SHEET E13</p> <p>○ SINGLE LINE TRANSFORMER (CONFIGURATION AS INDICATED)</p> <p>○ SINGLE LINE CIRCUIT BREAKER</p> <p>○ SINGLE LINE FUSED DISCONNECT</p> <p>○ SINGLE LINE GROUNDING</p> <p>2W2" DB DIRECT BURIED CONDUIT. NUMBER & SIZE AS INDICATED ON DRAWING.</p> <p>..... WIREWAY</p>
---	--	---	--

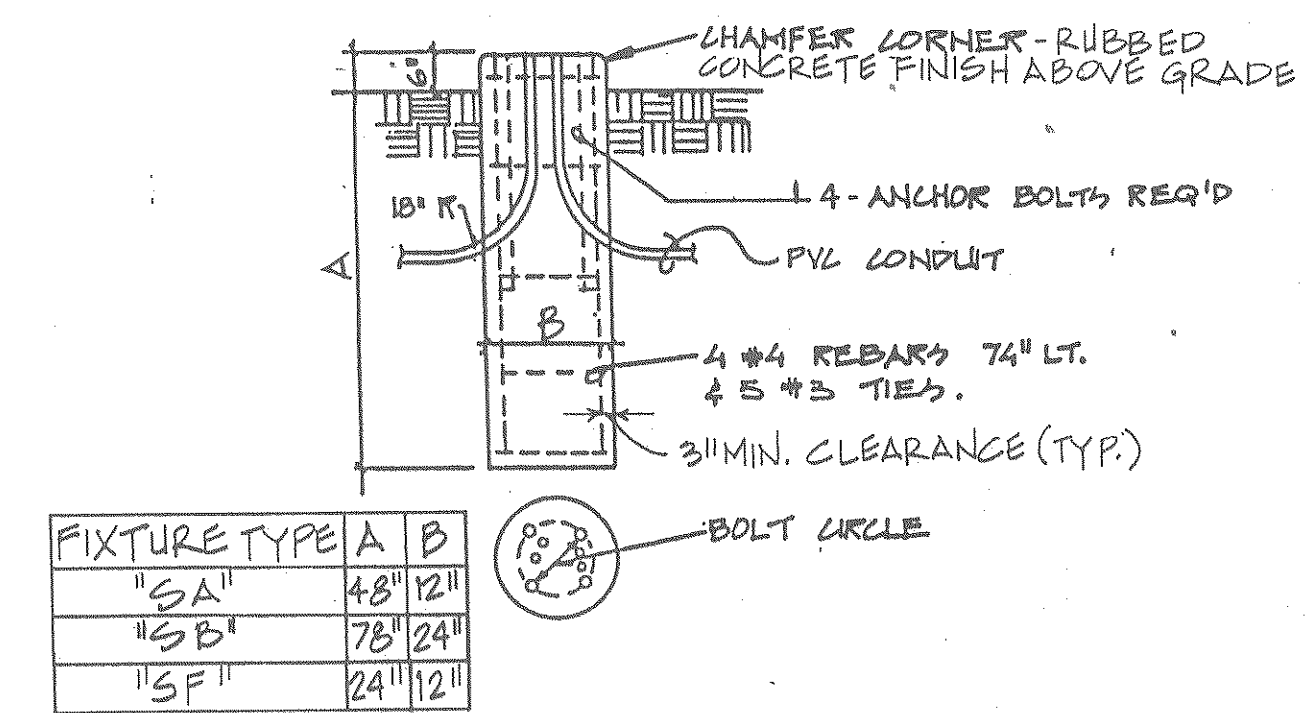
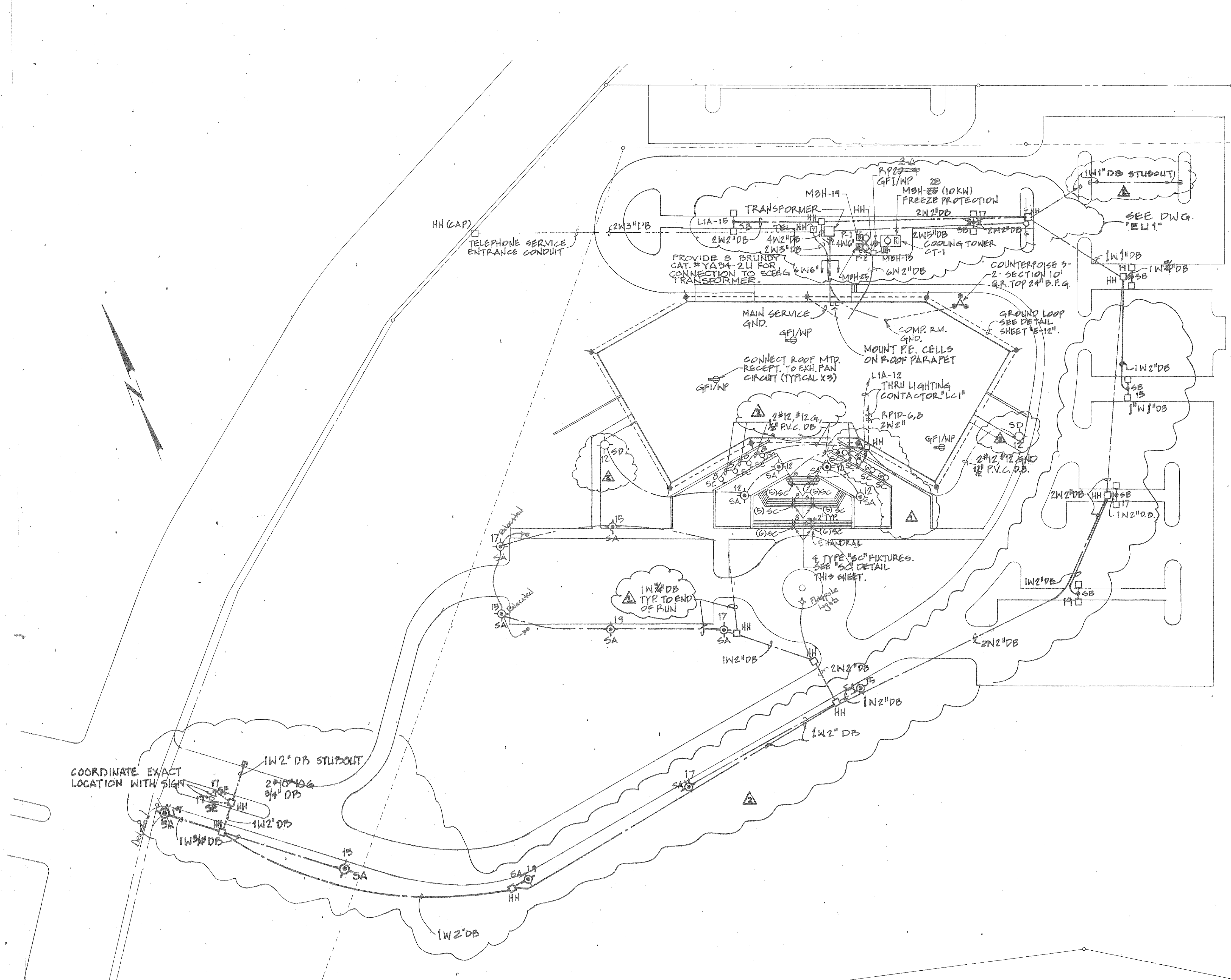
RECORD DRAWINGS

SUBCONTRACTOR: _____ Signature _____ Date _____

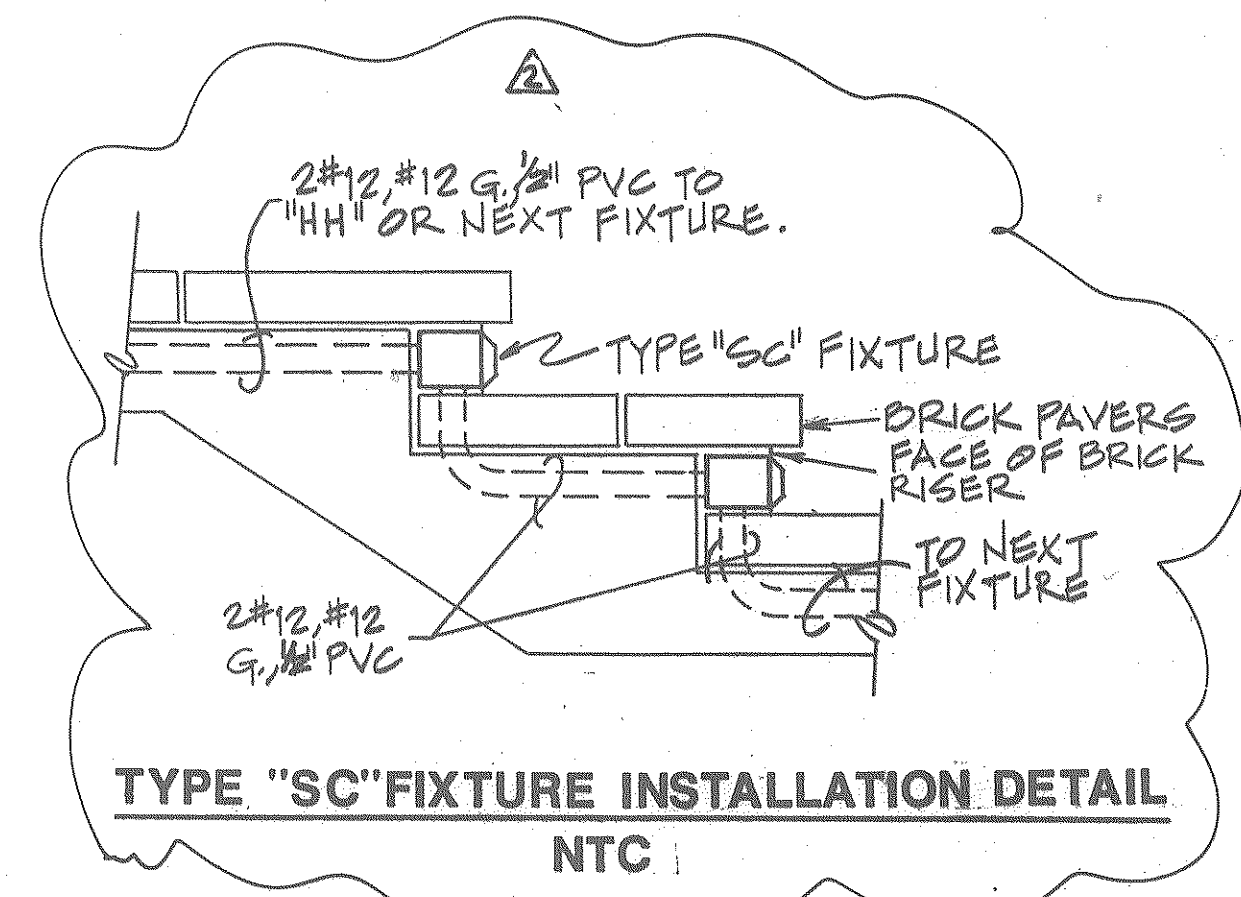
GENERAL CONTRACTOR: _____ Signature _____ Date 6-26-90

GENERAL CONTRACTOR SHALL VERIFY SUBCONTRACTORS SIGNATURE IF APPLICABLE.

 <p>The State of South Carolina</p>	<p>AGENCY OR INSTITUTION</p>  <p>DEPARTMENT OF MENTAL RETARDATION</p> <p>DIVISION: ELECTRICAL</p>	<p>PROFESSIONAL SEAL</p> 	<p>A & E FIRM</p>  <p>CARLISLE ASSOCIATES</p> <p>1015 GERVAIS STREET P.O. BOX 11528 COLUMBIA, SC 29211 (803) 252-3232</p>	<p>SHEET TITLE</p> <p>ELECTRICAL SYMBOL LEGEND & NOTES</p>	<p>PROJECT TITLE</p> <p>CENTRAL OFFICE BUILDING PHASE II</p>
<p>STATE PROJECT NO. J16-8933</p>		<p>DRAWING NO. S75-E1</p>		<p>SHEET E1 OF 13</p>	
<p>DATE 4/1/88</p>		<p>REVISION NO. DATE BY APP.</p>		<p>A & E PROJECT NO. S75</p>	
<p>DRAWN BY JRF</p>		<p>CHECKED BY WFF</p>		<p>FINAL APP. WFF</p>	



POLE BASE DETAIL
NTS



TYPE "SC" FIXTURE INSTALLATION DETAIL
NTC

RECORD DRAWINGS

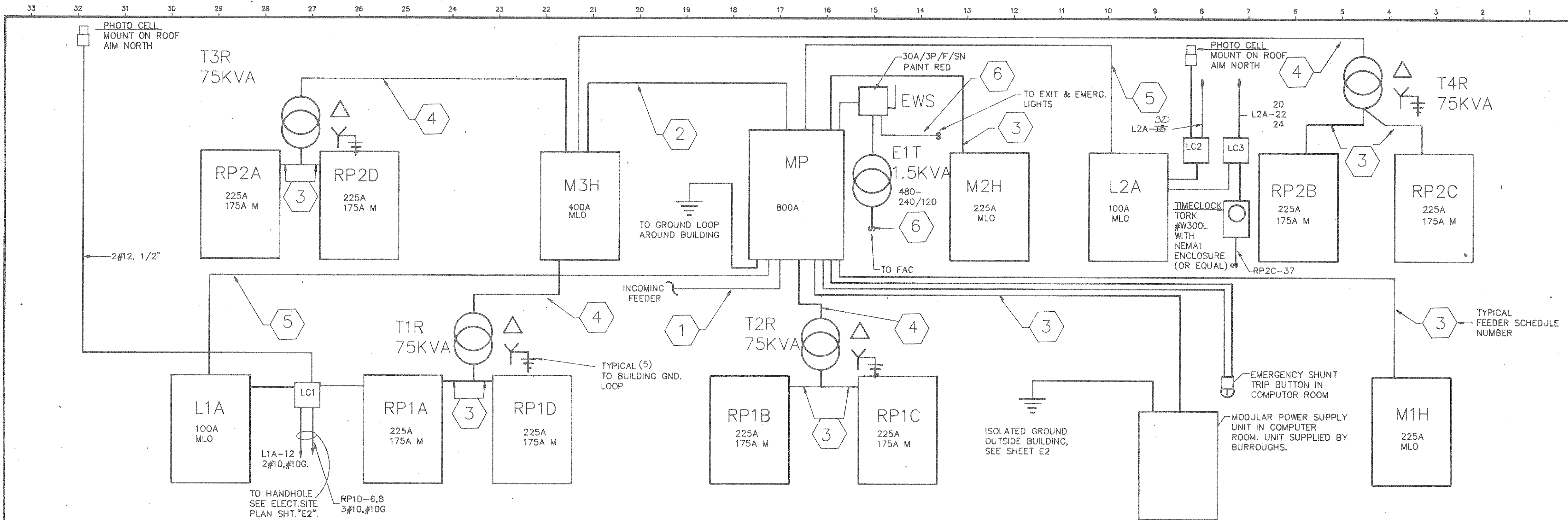
SUBCONTRACTOR: _____ Date _____
 GENERAL CONTRACTOR: _____ Date 6-26-90
 GENERAL CONTRACTOR SHALL VERIFY SUBCONTRACTORS SIGNATURE IF APPLICABLE.

NOTES

- ALL CONDUIT 36" BFG UNLESS NOTED OTHERWISE.
- ALL SITE LIGHTING BRANCH CRTS. #8 UNLESS NOTED OTHERWISE.
- ALL BRANCH CRT. CONDUIT RIGID STEEL INSIDE BLDG. TRANSITION TO PVC WITH JB 6" ABOVE F.F. INSIDE BLDG.

ELECTRICAL SITE PLAN
SCALE : 1" = 40'

<p>The State of South Carolina</p>	<p>DEPARTMENT OF MENTAL RETARDATION</p> <p>DIVISION: ELECTRICAL</p>	<p>PROFESSIONAL SEAL</p>	<p>A & E FIRM</p> <p>CARLISLE ASSOCIATES</p> <p>1015 CERVAIS STREET P.O. BOX 11528 COLUMBIA, SC 29211 (803) 252-3232</p>	<p>SHEET TITLE</p> <p>ELECTRICAL SITE PLAN</p>	<p>PROJECT TITLE</p> <p>CENTRAL OFFICE BUILDING PHASE II</p>

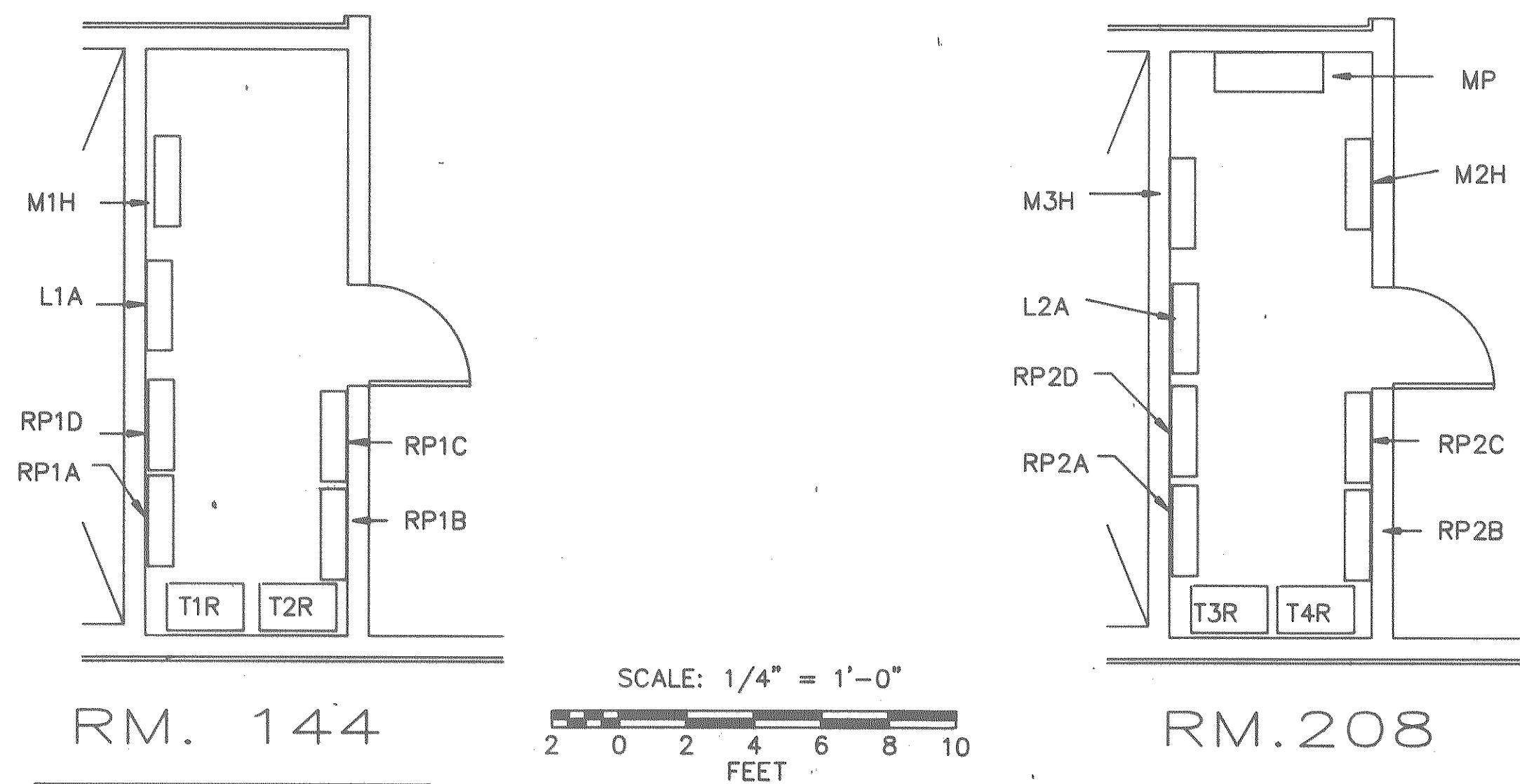


ELECTRICAL RISER DIAGRAM
N. T. S.

NOTE:
"LC1", "LC2", "LC3". LIGHTING CONTACTORS, 20A, 4P, EOEH, 120V. COIL, NEMA-1 ENCLOSURE.

FEEDER SCHEDULE

1. 2(4 #500 MCM-5")
2. 2(4 #250 MCM, #2 GND.-3")
3. 4 #300 MCM, #6GND.-3"
4. 3 #2, #6GND.-1 1/4"
5. 4 #1, #8 GND.-1 1/4"
6. 2 #10, #10 GND.-3/4"

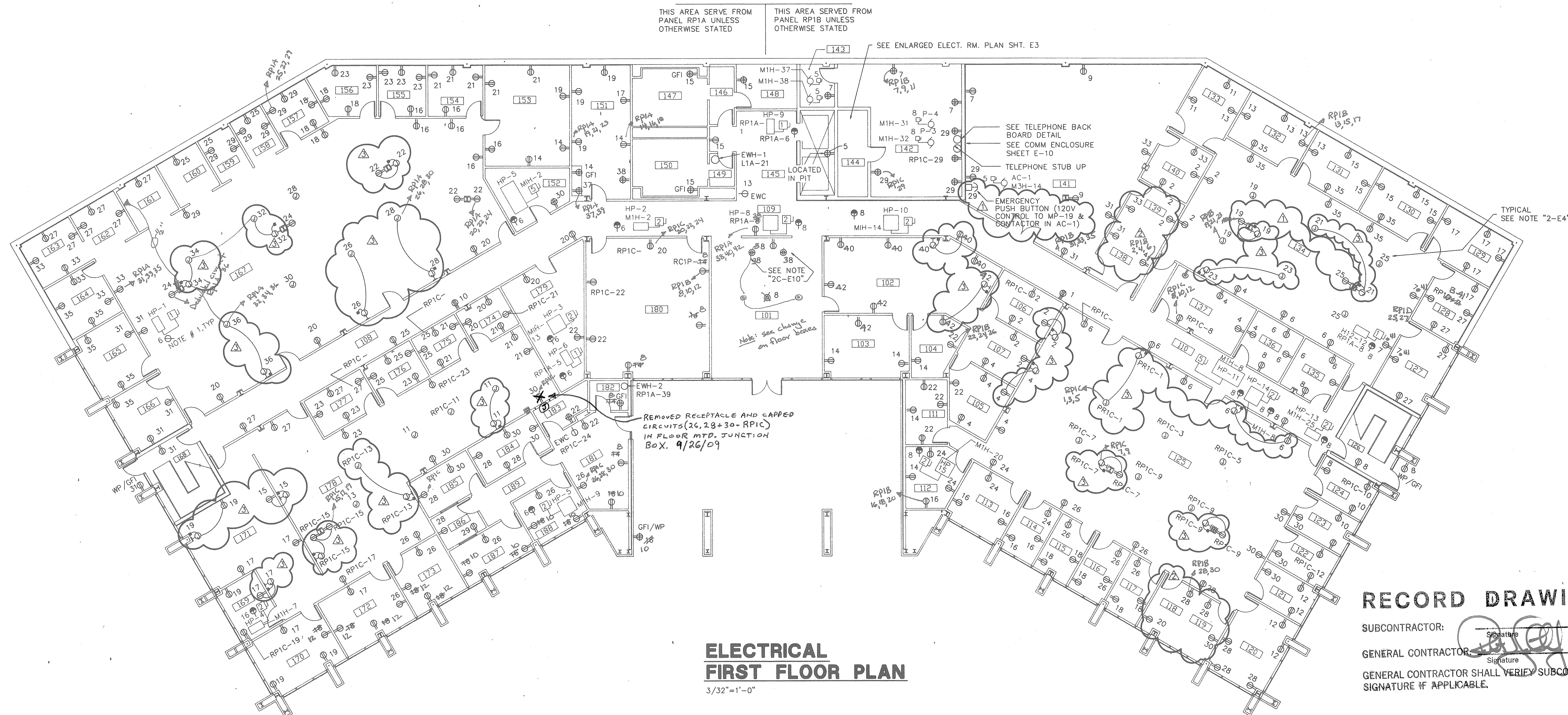


ENLARGED ELECT. RM. PLANS

RECORD DRAWINGS

SUBCONTRACTOR: _____
 GENERAL CONTRACTOR: _____
 GENERAL CONTRACTOR SHALL VERIFY SUBCONTRACTORS SIGNATURE IF APPLICABLE.

	AGENCY OR INSTITUTION DEPARTMENT OF MENTAL RETARDATION DIVISION: ELECTRICAL	PROFESSIONAL SEAL 	A & E FIRM CARLISLE ASSOCIATES 1015 GERVAIS STREET P.O. BOX 11528 COLUMBIA, SC 29211 (803) 252-3232	SHEET TITLE ELECTRICAL RISER DIAGRAM	PROJECT TITLE CENTRAL OFFICE BUILDING PHASE II
	STATE PROJECT NO. J16-8933	DRAWING NO. S75-E3	SHEET E3 OF 13	DATE 4/1/88	DRAWN BY JRF CHECKED BY WFF FINAL APP. WFF



**ELECTRICAL
FIRST FLOOR PLAN**
3/32"=1'-0"

RECORD DRAWINGS

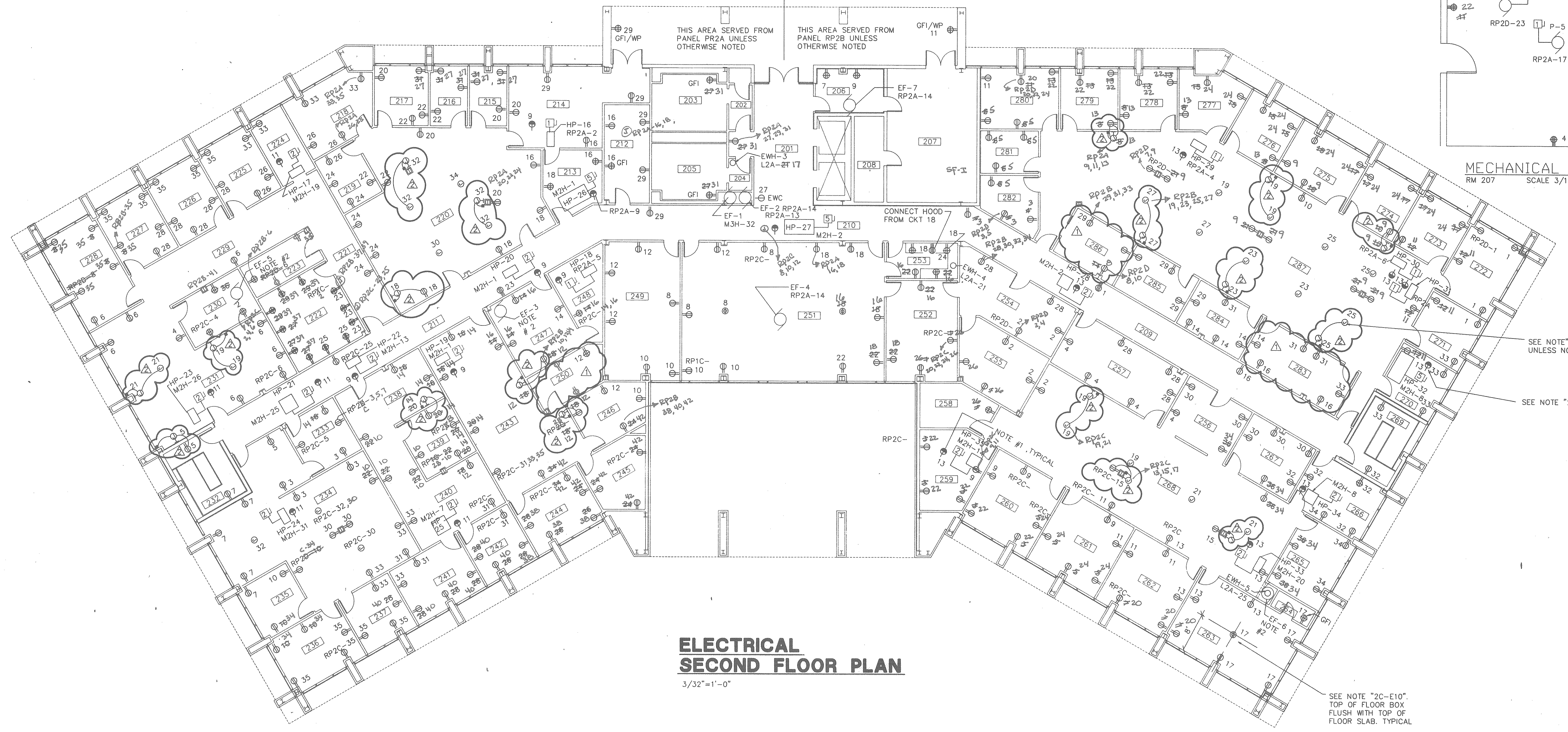
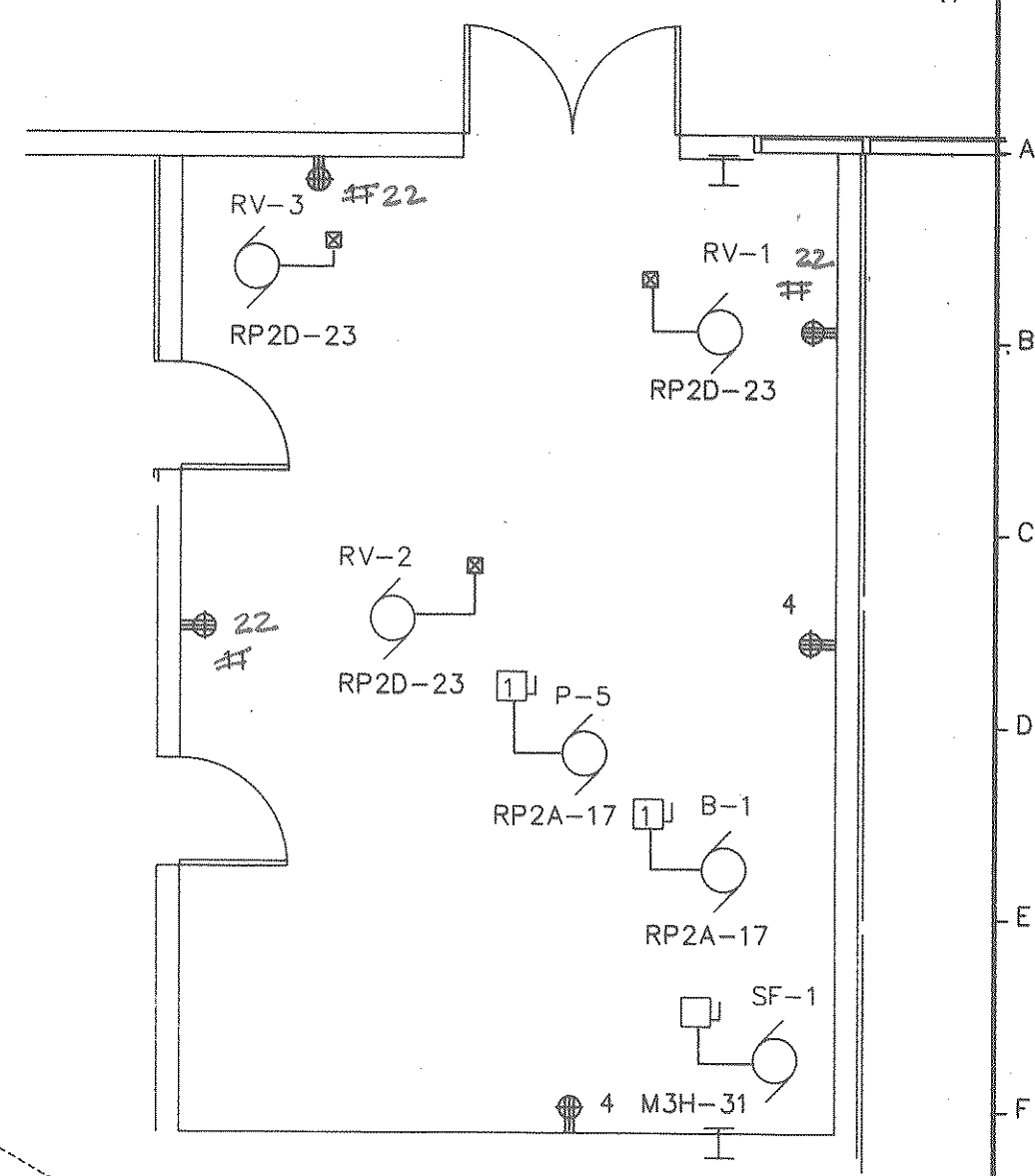
SUBCONTRACTOR: _____ Date _____
 GENERAL CONTRACTOR: _____ Date 6-26-90
 GENERAL CONTRACTOR SHALL VERIFY SUBCONTRACTORS SIGNATURE IF APPLICABLE.

- TYPICAL CONDUIT USAGE:
1. USE PVC BELOW GRADE. USE STEEL ELBOWS AT ALL TURNS.
 2. EMT CONDUIT WITH CAST COMPRESSION FITTINGS CAN BE USED ABOVE CEILINGS, IN DRY WALLS, ABOVE 7' IN SIZES 2" OR LESS.
 3. RIGID CONDUIT IN MECH/ELECT ROOMS, EXPOSED BELOW 7' AND OUTDOORS ABOVE GROUND.
 4. ASPHALT COATED RIGID CONDUIT SHALL BE USED ON THE SECONDARY SERVICE INTO THE BUILDING, AND CONDUITS ENTERING THE BUILDING FROM OUTSIDE.
 5. WIRE WAY FOR COMMUNICATION ABOVE CEILING.

NOTE:
 1. MOUNT RECEPTACLE ON BOTTOM OF OVERHEAD CONDENSATE PUMP. COORDINATE WITH MECH. FOR EXACT LOCATION.
 2. INSTALL CEILING JUNCTION BOXES. FOR USE BY OWNER, ON STRUCTURAL CEILING. TERMINATE CIRCUITS IN J.B. WITH WIRE NUTS.

<p>The State of South Carolina</p>	AGENCY OR INSTITUTION DEPARTMENT OF MENTAL RETARDATION DIVISION ELECTRICAL	PROFESSIONAL SEAL 	A & E FIRM CARLISLE ASSOCIATES 1015 GERVAIS STREET P.O. BOX 11528 COLUMBIA, SC 29211 (803) 252-3232	SHEET TITLE ELECTRICAL FIRST FLOOR PLAN	PROJECT TITLE CENTRAL OFFICE BUILDING PHASE II
	WALL SECTION CONN. 4/6/89 MEL JRF WALL REVISIONS 2/23/89 RCH JRF CLARIFICATION 2/23/89 RCH JRF REVISION NO. DATE BY APP.	A & E PROJECT NO. S75	DRAWN BY JRF CHECKED BY WFF FINAL APP. WFF	STATE PROJECT NO. J16-8933 DRAWING NO. S75-E4 DATE 4/6/89	SHEET E4 OF 13 R2

NOTES:
 1. MOUNT RECEPTACLES ON BOTTOM OF OVERHEAD CONDENSATEPUMP COORDINATE WITH MECHANICAL FOR EXACT LOCATION
 2. CONNECT E.F. TO NEAREST RECEPTACLE CIRCUIT.



SEE NOTE "2-E4" ALL LOCATIONS UNLESS NOTED OTHERWISE.

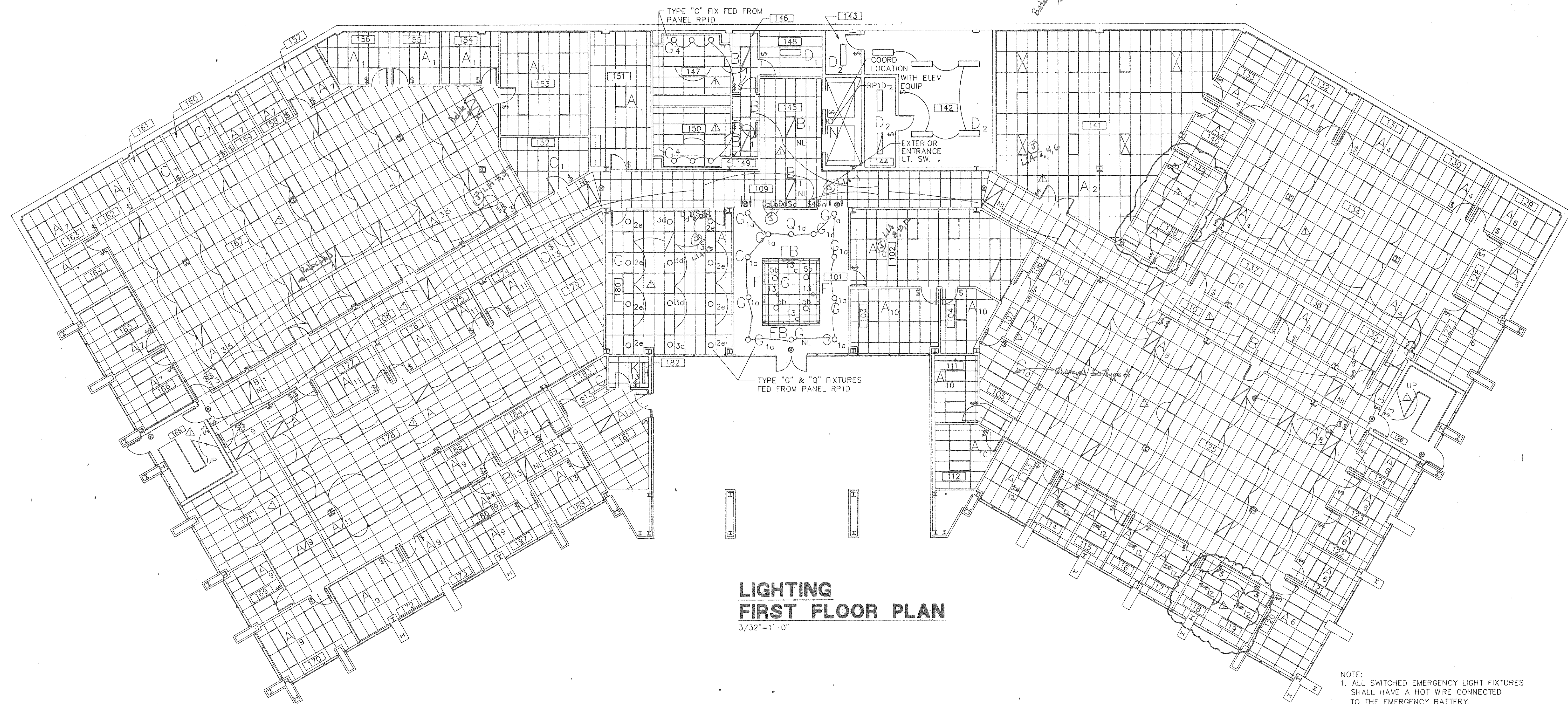
SEE NOTE "2-E5" ALL LOCATIONS.

SEE NOTE "2C-E10" TOP OF FLOOR BOX FLUSH WITH TOP OF FLOOR SLAB. TYPICAL

RECORD DRAWINGS

SUBCONTRACTOR: _____
 GENERAL CONTRACTOR: _____
 GENERAL CONTRACTOR SHALL VERIFY SUBCONTRACTORS SIGNATURE IF APPLICABLE.

<p>The State of South Carolina</p>	<p>DEPARTMENT OF MENTAL RETARDATION</p>		<p>A & E FIRM</p> <p>CARLISLE ASSOCIATES</p> <p>1015 GERVAIS STREET P.O. BOX 11528 COLUMBIA, SC 29211 (803) 252-3232</p>	<p>SHEET TITLE</p> <p>ELECTRICAL SECOND FLOOR PLAN</p>	<p>PROJECT TITLE</p> <p>CENTRAL OFFICE BUILDING PHASE II</p>
	<p>DIVISION: ELECTRICAL</p>	<p>AGENCY OR INSTITUTION</p>	<p>PROFESSIONAL SEAL</p>	<p>WALL SECTION CONN. 4/6/89 MEL JRF WALL REVISIONS 2/23/89 RCH JRF REVISION N.O. DATE BY APP.</p>	<p>DATE 4/6/89</p>

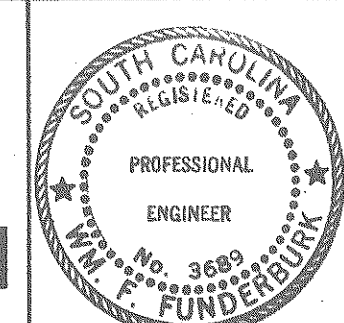
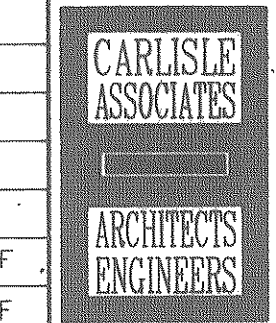


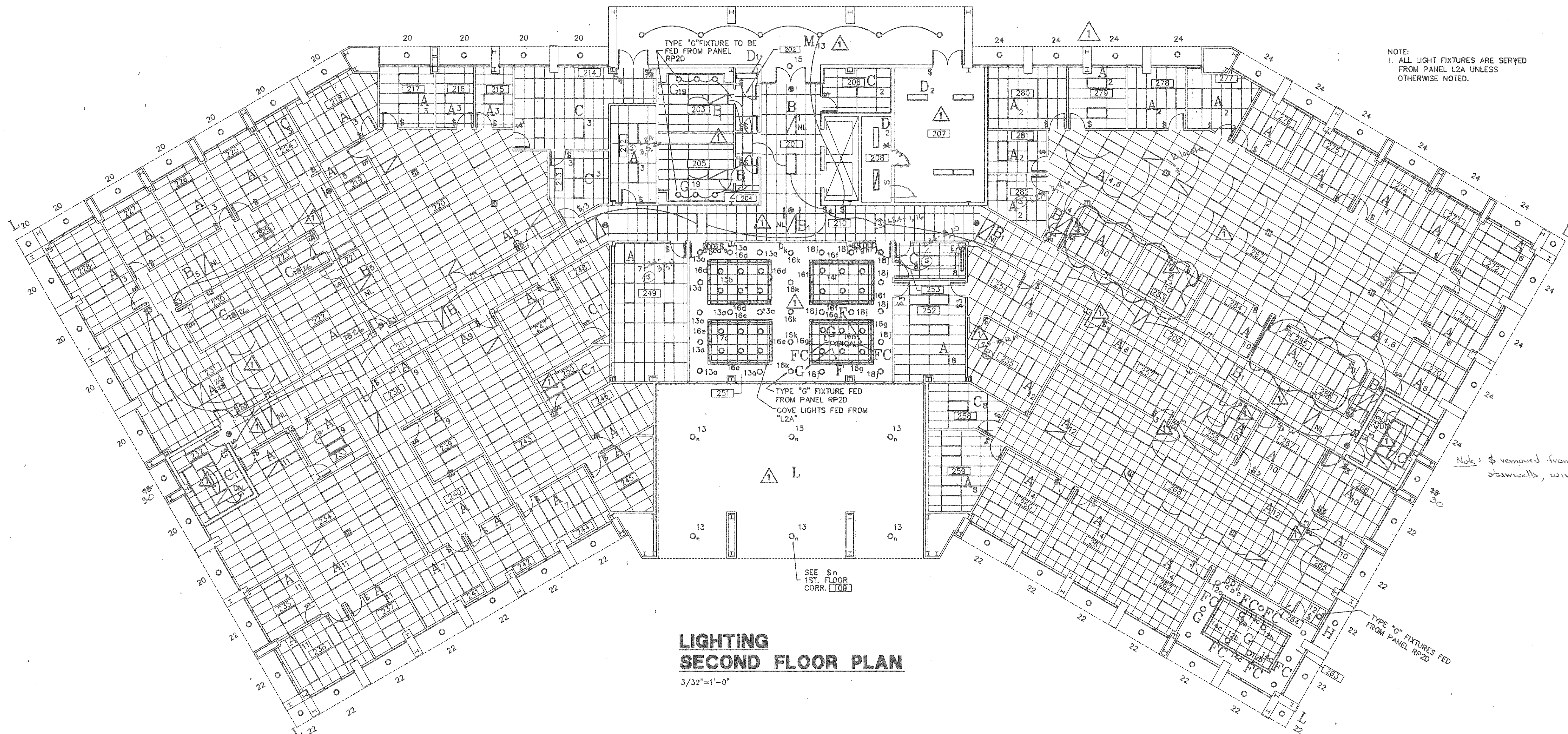
**LIGHTING
FIRST FLOOR PLAN**
3/32"=1'-0"

NOTE:
1. ALL SWITCHED EMERGENCY LIGHT FIXTURES SHALL HAVE A HOT WIRE CONNECTED TO THE EMERGENCY BATTERY.
2. ALL LIGHTS ON THIS FLOOR ARE SERVED FROM PANELBOARD L1A UNLESS OTHERWISE NOTED.

RECORD DRAWINGS

SUBCONTRACTOR: _____ Date _____
 GENERAL CONTRACTOR: _____ Date _____
 GENERAL CONTRACTOR SHALL VERIFY SUBCONTRACTORS SIGNATURE IF APPLICABLE.

The State of South Carolina	AGENCY OR INSTITUTION DEPARTMENT OF MENTAL RETARDATION	PROFESSIONAL SEAL 	A & E FIRM  CARLISLE ASSOCIATES 1015 GERVAIS STREET P.O. BOX 11528 COLUMBIA, SC 29211 (803) 252-3232	SHEET TITLE LIGHTING FIRST FLOOR PLAN	PROJECT TITLE CENTRAL OFFICE BUILDING PHASE II											
	DIVISION: ELECTRICAL	<table border="1" style="width: 100%; border-collapse: collapse;"> <tr> <td>Δ WALL REMOVED</td> <td>2/22/89</td> <td>JRF</td> <td>JRF</td> </tr> <tr> <td>Δ SWITCH CLARIFICATION</td> <td>2/22/89</td> <td>JRF</td> <td>JRF</td> </tr> <tr> <td>REVISION NO.</td> <td>DATE</td> <td>BY</td> <td>APP.</td> </tr> </table>	Δ WALL REMOVED	2/22/89	JRF	JRF	Δ SWITCH CLARIFICATION	2/22/89	JRF	JRF	REVISION NO.	DATE	BY	APP.	A & E PROJECT NO. S75	DRAWN BY JRF CHECKED BY WFF FINAL APP. WFF
Δ WALL REMOVED	2/22/89	JRF	JRF													
Δ SWITCH CLARIFICATION	2/22/89	JRF	JRF													
REVISION NO.	DATE	BY	APP.													



NOTE:
1. ALL LIGHT FIXTURES ARE SERVED FROM PANEL L2A UNLESS OTHERWISE NOTED.

**LIGHTING
SECOND FLOOR PLAN**
3/32" = 1'-0"

RECORD DRAWINGS

SUBCONTRACTOR: _____ Date _____
 GENERAL CONTRACTOR: *[Signature]* Date *6-26-90*
 GENERAL CONTRACTOR SHALL VERIFY SUBCONTRACTORS SIGNATURE IF APPLICABLE.

The State of South Carolina DIVISION: ELECTRICAL	AGENCY OR INSTITUTION DEPARTMENT OF MENTAL RETARDATION	PROFESSIONAL SEAL 	A & E FIRM CARLISLE ASSOCIATES 1015 GERVAIS STREET P.O. BOX 11528 COLUMBIA, SC 29211 (803) 252-3232	SHEET TITLE LIGHTING SECOND FLOOR PLAN	PROJECT TITLE CENTRAL OFFICE BUILDING PHASE II
	WALL REVISIONS 2/23/89 RCH JRF SWITCH CLARIFICATION 2/22/89 RCH JRF REVISION NO. DATE BY APP.	A & E PROJECT NO. S75	DRAWN BY JRF CHECKED BY WFF FINAL APP. WFF	STATE PROJECT NO. J16-8933 DRAWING NO. S75-E7 DATE 4/1/88	SHEET E7R OF 13

PANELBOARD: MP
 AMPS: 800
 VOLTS: 480/277
 PHASE: 3
 WIRES: 4
 SPACES: 42
 FEEDER: 2(4-500MCM) 4 PVC

FED FROM: SCE&G TRANS
 MOUNTING: SURFACE
 FEEDER ENTR: BOTTOM
 A. I. C. -MAIN: 22000
 -BRANCHES: 22000
 LOCATION: RM 208

CKT BREAKER NO.	AMP POLES	DESCRIPTION	WIRE & CONDUIT			LOAD IN KVA		
			ØA	ØB	ØC	ØA	ØB	ØC
1	225	3 PBN M1H	4-300MCM, #2G-3					
3								
5								
7	100	3 PBN L1A	4#1, #8G-1-1/4					
9								
11								
13	400	3 PBN M3H	2(4-250MCM, #2G-3)					
15								
17								
19	200	3 *COMPUTER ROOM	3#3/0, #6G, 2" #6G-3					
21								
23								
25								
27								
29								
31								
33								
35								
37								
39								
41	225	3 PBN M2H	4-300MCM, #2G-3					
43								
8	100	3 PBN L2A	4#1, #8G-1-1/4					
10								
12								
14								
16		3 CSW						
18								
20								
22								
24								
26								
28								
30								
32								
34								
36								
38								
40								
42								

RECORD DRAWINGS

SUBCONTRACTOR: _____
 GENERAL CONTRACTOR: _____
 GENERAL CONTRACTOR SHALL VERIFY SUBCONTRACTORS SIGNATURE IF APPLICABLE.

PANELBOARD: M1H
 AMPS: 225
 VOLTS: 480/277
 PHASE: 3
 WIRES: 4
 SPACES: 42
 FEEDER: 4-300MCM, #2G-3

FED FROM: MP(1)
 MOUNTING: SURFACE
 FEEDER ENTR: TOP
 A. I. C. -MAIN: MLO
 -BRANCHES: 22000
 LOCATION: RM144

CKT BREAKER NO.	AMP POLES	DESCRIPTION	WIRE & CONDUIT			LOAD IN KVA		
			ØA	ØB	ØC	ØA	ØB	ØC
1	20	3 HP-8	3#12, 12G-3/4			.9		
3								
5								
7								
9								
11								
13								
15								
17								
19								
21								
23								
25								
27								
29								
31								
33								
35								
37								
39								
41								
43								
45								
47								
49								
51								
53								
55								
57								
59								
61								
63								
65								
67								
69								
71								
73								
75								
77								
79								
81								
83								
85								
87								
89								
91								
93								
95								
97								
99								
101								
103								
105								
107								
109								
111								
113								
115								
117								
119								
121								
123								
125								
127								
129								
131								
133								
135								
137								
139								
141								
143								
145								
147								
149								
151								
153								
155								
157								
159								
161								
163								
165								
167								
169								
171								
173								
175								
177								
179								
181								
183								
185								
187								
189								
191								
193								
195								
197								
199								
201								
203								
205								
207								
209								
211								
213								
215								
217								
219								
221								
223								
225								
227								
229								
231								
233								
235								
237								
239								
241								
243								
245								
247								
249								
251								
253								
255								
257								
259								
261								
263								
265								
267								
269								
271								
273								
275								
277								
279								
281								
283								
285								
287								
289								
291								
293								
295								
297								
299								
301								
303								
305								
307								
309								
311								
313								
315								
317								
319								
321								
323								
325								
327								

PANELBOARD: RP1C 3/ 2/1988
 AMPS: 225 FED FROM: M3H(1)
 VOLTS: 208/120 MOUNTING: SURFACE
 PHASE: 3 FEEDER ENTR: TOP
 WIRES: 4 A.I.C.-MAIN: 175/10000
 SPACES: 42 -BRANCHES: 10000
 FEEDER: 4#4/0, #6G, 2-1/2" LOCATION: RM144

CKT BREAKER NO.	AMP POLES	DESCRIPTION	WIRE & CONDUIT			LOAD IN KVA		
			ØA	ØB	ØC	ØA	ØB	ØC
1	20	1 RM 125 PP	2#12, #12G-3/4			.7		
3	20	1 RM 125 PP	2#12, #12G-3/4			.7		
5	20	1 RM 125 PP	2#12, #12G-3/4			.7		.7
7	20	1 RM 125 PP	2#12, #12G-3/4			.7		.7
9	20	1 RM 125 PP	2#12, #12G-3/4			.7		.7
11	20	1 RM 178 PP	2#12, #12G-3/4			.7		.7
13	20	1 RM 178 PP	2#12, #12G-3/4			.7		.7
15	20	1 RM 171, 178	2#12, #12G-3/4			.7	1.1	
17	20	1 RM 169 THRU 172	2#12, #12G-3/4			.9		1.1
19	20	1 RM 169, 171	2#12, #12G-3/4			.9		1.1
21	20	1 RM 174, 175, 178	2#12, #12G-3/4			.9		.9
23	20	1 RM 176, 177, 178	2#12, #12G-3/4			.9		.9
25	20	1 RM 108, 175, 176	2#12, #12G-3/4			.9		.7
27	20	1 RM 109, 177, 178	2#12, #12G-3/4			.9		.7
29	20	1 RM 141 TELEPHONE	2#12, #12G-3/4			.6		
31	20	1 SPARE						
33	20	1 SPARE						
35	20	1 SPARE						
37	20	1 SPARE						
39	20	1 SPARE						
41	20	1 SPARE						
42	20	1 SPARE						
4	20	1 RM 105, 107, 125	2#12, #12G-3/4			1.1	1.1	
6	20	1 RM 110, 125	2#12, #12G-3/4			1.1	1.1	1.1
8	20	1 RM 110, 124, 126, 135-7	2#12, #12G-3/4			1.1	.9	
10	20	1 RM 122, 123, 124	2#12, #12G-3/4			1.1	.9	
12	20	1 RM 120, 121, 122	2#12, #12G-3/4			.9		.9
14	20	1 RM 180, 181, 182	2#12, #12G-3/4			.9		.9
16	20	1 RM 181, 187, 188	2#12, #12G-3/4			.9		1.1
18	20	1 RM 170, 172, 173	2#12, #12G-3/4			1.1		.9
20	20	1 RM 108, 174, 179, 180	2#12, #12G-3/4			1.1	.9	
22	20	1 RM 179, 180, 181, 183	2#12, #12G-3/4			1.1	.4	
24	20	1 RM 181, E.H.C.	2#12, #12G-3/4			1.1	1.1	
26	20	1 RM 173, 178, 181, 186-8	2#12, #12G-3/4			1.1	1.1	
28	20	1 RM 178, 184-6, 189	2#12, #12G-3/4			1.1	1.1	
30	20	1 RM 178, 184-6, 189	2#12, #12G-3/4			1.1	1.1	
32	20	1 RM 144	2#12, #12G-3/4			.2		
34	20	1 SPARE						
36	20	1 SPARE						
38	20	1 SPARE						
40	20	1 SPARE						
42	20	1 SPARE						

S75RP1C.CAL TOTAL Ø 9.4 9 8.6 TOTAL KVA 27

PANELBOARD: RP1D 3/ 2/1988
 AMPS: 225 FED FROM: M3H(2)
 VOLTS: 208/120 MOUNTING: SURFACE
 PHASE: 3 FEEDER ENTR: TOP
 WIRES: 4 A.I.C.-MAIN: 175/10000
 SPACES: 42 -BRANCHES: 10000
 FEEDER: 4#4/0, #6G, 2-1/2" LOCATION: RM208

CKT BREAKER NO.	AMP POLES	DESCRIPTION	WIRE & CONDUIT			LOAD IN KVA		
			ØA	ØB	ØC	ØA	ØB	ØC
1	20	1 LTS RM 101	2#12, #12G-3/4			1.5		
3	20	1 LTS RM 101	2#12, #12G-3/4			1.4		
5	20	1 LTS RM 101, 180	2#12, #12G-3/4			1.8		
7	20	1 RM 127, 128	2#12, #12G-3/4			.7		
9	20	1 SPARE						
11	20	1 SPARE						
13	20	1 SPARE						
15	20	1 SPARE						
17	20	1 PS- AND B-1	2#12, #12G-3/4			.8		
19	20	1 RM 231 PP	2#12, #12G-3/4			.4		
21	20	1 RM 231 PP	2#12, #12G-3/4			.7		
23	20	2 RM 211	2#12, #12G-3/4			.6		
25	20	1 RM 156 THRU 160	2#12, #12G-3/4			.6		
27	20	1 RM 201, 203, 205	2#12, #12G-3/4			1		
29	20	1 RM 210, 212, 214	2#12, #12G-3/4			.9		
31	20	1 RM 214, 215, 216, 217	2#12, #12G-3/4			.9		
33	20	1 RM 217, 218, 224, 226	2#12, #12G-3/4			.9		
35	20	1 RM 225, 226, 227	2#12, #12G-3/4			1.1		
37	20	1 MICROWAVE	2#12, #12G-3/4			.8		
39	20	1 SPARE				3.6	3.6	
41	20	1 SPARE				1.4	1.4	
42	20	1 SPARE				1.4	1.4	
4	20	1 LTS RM 180	2#12, #12G-3/4			1.8		
6	20	1 SITE LIGHTS	2#10, #10G-3/4			.5		
8	20	1 SITE LIGHTS	2#10, #10G-3/4			.8		
10	20	1 SITE LIGHTS	2#10, #10G-3/4			1.2		
12	20	1 SITE LIGHTS	2#10, #10G-3/4			1.2		
14	20	1 SPARE						
16	20	1 SPARE						
18	20	1 SPARE						
20	20	1 SPARE						
22	20	1 SPARE						
24	20	1 SPARE						
26	20	1 SPARE						
28	20	1 SPARE						
30	20	1 SPARE						
32	20	1 SPARE						
34	20	1 SPARE						
36	20	1 SPARE						
38	20	1 SPARE						
40	20	1 SPARE						
42	20	1 SPARE						

S75RP1D.CAL TOTAL Ø 4.8 3.6 3.5 TOTAL KVA 11.9

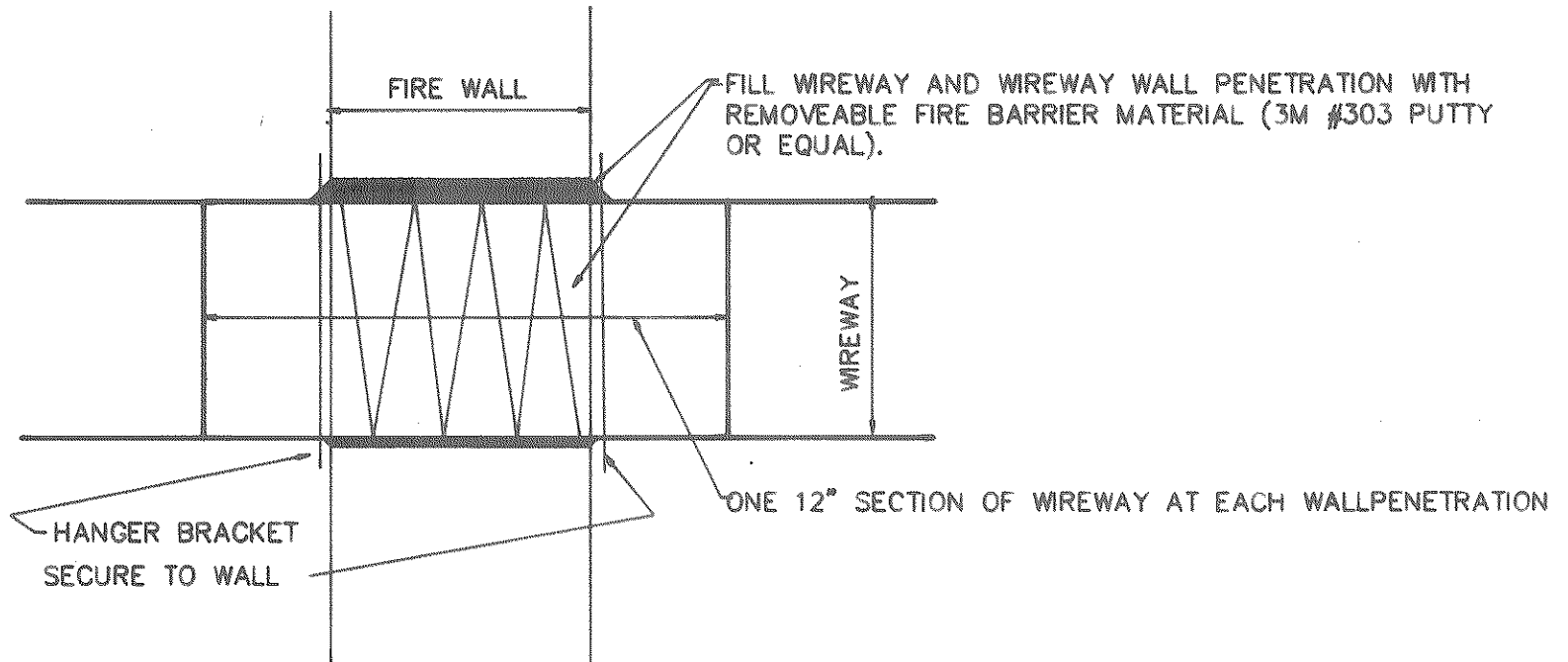
PANELBOARD: RP2A 3/ 2/1988
 AMPS: 225 FED FROM: M3H(2)
 VOLTS: 208/120 MOUNTING: SURFACE
 PHASE: 3 FEEDER ENTR: TOP
 WIRES: 4 A.I.C.-MAIN: 175/10000
 SPACES: 42 -BRANCHES: 10000
 FEEDER: 4#4/0, #6G, 2-1/2" LOCATION: RM208

CKT BREAKER NO.	AMP POLES	DESCRIPTION	WIRE & CONDUIT			LOAD IN KVA		
			ØA	ØB	ØC	ØA	ØB	ØC
1	30	2 HP-16	2#10, #10G-3/4			1.4		
3	30	2 HP-18	2#10, #10G-3/4			1.4		
5	30	2 HP-18	2#10, #10G-3/4			1.4		
7	20	1 CONDENSATE PUMPS	2#12, #12G-3/4			.7		
9	20	1 CONDENSATE PUMPS	2#12, #12G-3/4			.6		
11	20	1 CONDENSATE PUMPS	2#12, #12G-3/4			.6		
13	20	1 CONDENSATE PUMPS	2#12, #12G-3/4			.8		
15	20	1 SPARE				.7		
17	20	1 PS- AND B-1	2#12, #12G-3/4			.8		
19	20	1 RM 231 PP	2#12, #12G-3/4			.4		
21	20	1 RM 231 PP	2#12, #12G-3/4			.7		
23	20	2 RM 211	2#12, #12G-3/4			.6		
25	20	1 RM 156 THRU 160	2#12, #12G-3/4			.6		
27	20	1 RM 201, 203, 205	2#12, #12G-3/4			1		
29	20	1 RM 210, 212, 214	2#12, #12G-3/4			.9		
31	20	1 RM 214, 215, 216, 217	2#12, #12G-3/4			.9		
33	20	1 RM 217, 218, 224, 226	2#12, #12G-3/4			.9		
35	20	1 RM 225, 226, 227	2#12, #12G-3/4			1.1		
37	20	1 MICROWAVE	2#12, #12G-3/4			.8		
39	20	1 SPARE				3.6	3.6	
41	20	1 SPARE				1.4	1.4	
42	20	1 SPARE				1.4	1.4	
4	20	2 HP-30	2#12, #12G-3/4			1.1	1.4	
6	20	2 HP-30	2#12, #12G-3/4			1.4	1.4	
8	20	1 CONDENSATE PUMP	2#12, #12G-3/4			1.4	.6	
10	20	2 HP-31	2#12, #12G-3/4			1.4	.6	
12	20	1 SPARE				.9	1.4	
14	20	1 EF-2, EF-4, EF-7	2#12, #12G-3/4			.5	.9	
16	20	1 RM 212, 213, 214, 220	2#12, #12G-3/4			.9	.9	
18	20	1 RM 220, 221, 213	2#12, #12G-3/4			1.1	.9	
20	20	1 RM 214, 215, 220	2#12, #12G-3/4			.9	.7	
22	20	1 RM 216, 217, 219, 220	2#12, #12G-3/4			.7	.9	
24	20	1 RM 219, 220, 221	2#12, #12G-3/4			.7	.9	
26	20	1 RM 218, 219, 225	2#12, #12G-3/4			.9	.9	
28	20	1 RM 226, 227, 228	2#12, #12G-3/4			.9	.7	
30	20	1 RM 220 PP	2#12, #12G-3/4			.7	.7	
32	20	1 RM 220 PP	2#12, #12G-3/4			.4	.7	
34	20	1 RM 220 PP	2#12, #12G-3/4			.7	.7	
36	20	1 RM 220 PP	2#12, #12G-3/4			.7	.7	
38	20	1 SPARE				.5	.2	
40	20	1 SPARE						
42	20	1 SPARE						

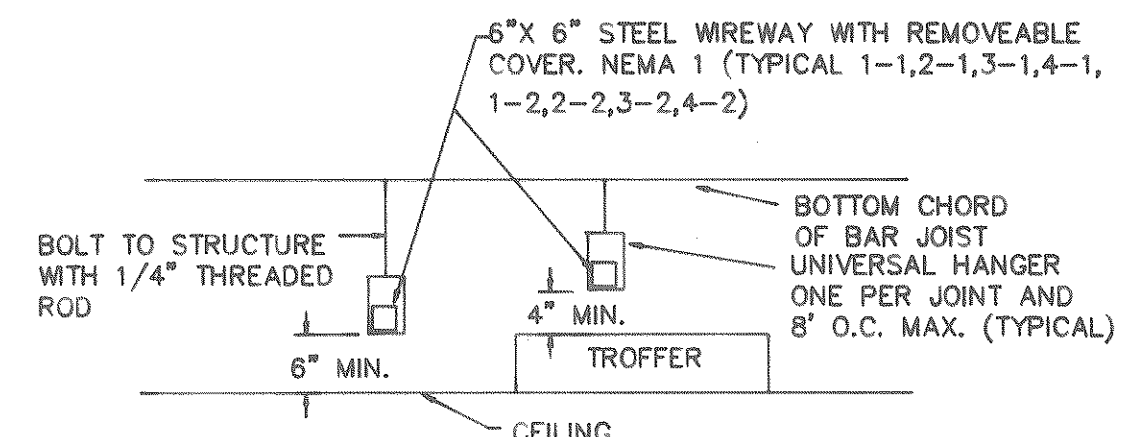
S75RP2A.CAL TOTAL Ø 16.4 19 17.7 TOTAL KVA 53.1

PANELBOARD: RP2B 3/ 2/1988
 AMPS: 225 FED FROM: M3H(2)
 VOLTS: 208/120 MOUNTING: SURFACE
 PHASE: 3 FEEDER ENTR: TOP
 WIRES: 4 A.I.C.-MAIN: 175/10000
 SPACES: 42 -BRANCHES: 10000
 FEEDER: 4#4/0, #6G, 2-1/2" LOCATION: RM208

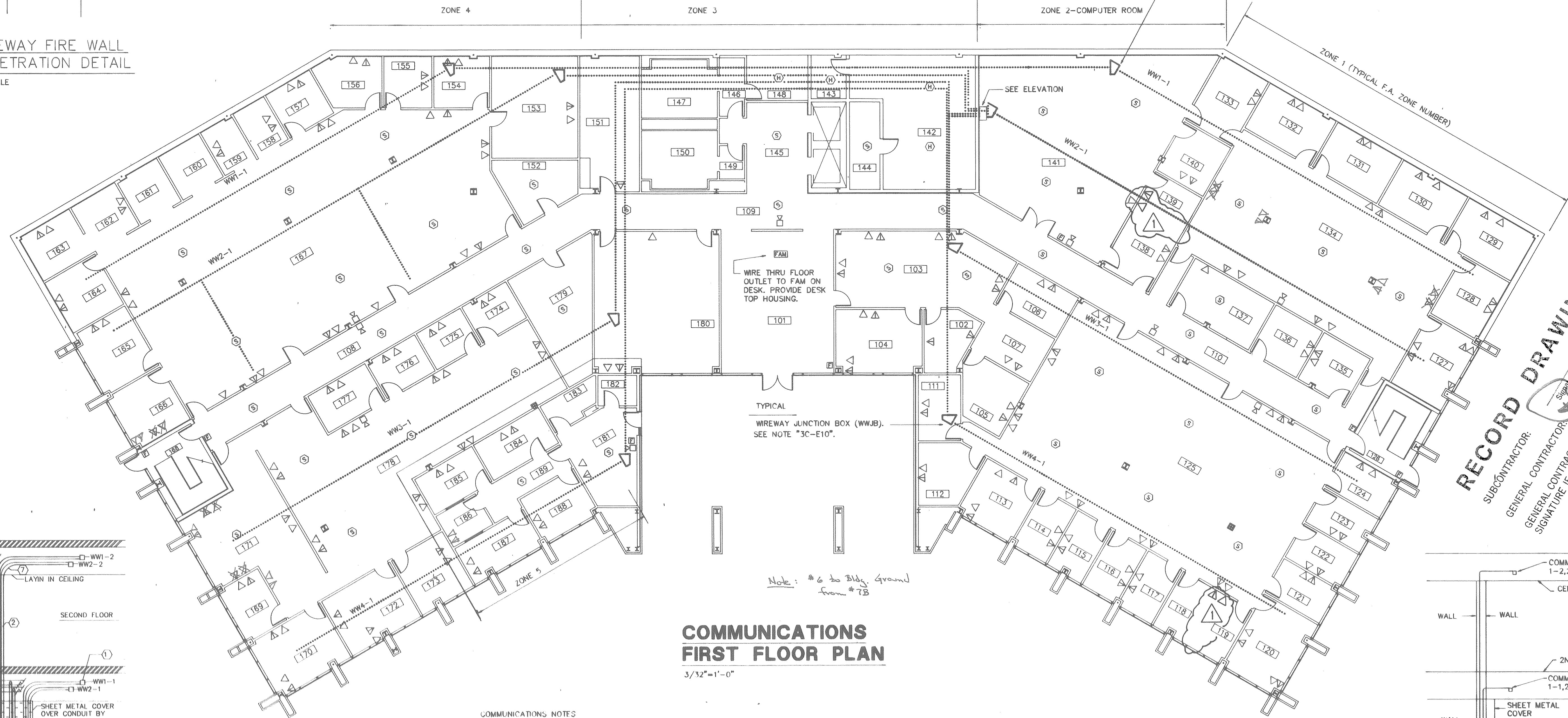
CKT BREAKER NO.	AMP POLES	DESCRIPTION	WIRE & CONDUIT			LOAD IN KVA		
			ØA	ØB	ØC	ØA	ØB	ØC
1	20	2 RM 209	2#12, #12G-3/4			.6		
3	20	1 RM 208	2#12, #12G-3/4			.6		.2
5	20	1 RM 205	2#12, #12G-3/4			.2		.2
7	20	1 RM 206	2#12, #12G-3/4			.2		.2
9	20	1 RM 207	2#12, #12G-3/4			.9		.9
11	20	1 RM 207	2#12, #12G-3/4			.9		.9
13	20	1 RM 207	2#12, #12G-3/4			.9		.9
15	20	1 RM 275, 276, 277	2#12, #12G-3/4			.9		.9
17	20	1 RM 273, 274, 275	2#12, #12G-3/4			.7		1.1
19	20	1 RM 287 PP	2#12, #12G-3/4			.7		.7
21	20	1 RM 287 PP	2#12, #12G-3/4			.7		.7
23	20	1 RM 287 PP	2#12, #12G-3/4			.7		.7
25	20	1 RM 287 PP	2#12, #12G-3/4			.7		.7
27	20	1 RM 283, 284, 287	2#12, #12G-3/4			.9		.9
29	20	1 RM 284-7, 218, 224, 225	2#12, #12G-3/4			.9		.9
31	20	1 RM 285, 286, 287, 288	2#12, #12G-3/4			.9		.9
33	20	1 SPARE RM 222						
35	20	1 SPARE RM 222						
37	20	1 SPARE RM 222						
39	20	1 SPARE RM 222						
41	20	1 SPARE						
42	20	1 SPARE						
4	20	1 RM 207, 209, 282	2#12, #12G-3/4			.9		
6	20	1 RM 208, 281, 282	2#12, #12G-3/4			1.1		
8	20	1 RM 277, 278, 279, 280	2#12, #12G-3/4			.9		1.1
10	20	1 RM 274, 275, 283	2#12, #12G-3/4			1.1		
12	20	1 RM 276, 278, 283, 287	2#12, #12G-3/4			.9		.9
14	20	1 RM 283, 284, 285	2#12, #12G-3/4			.9		.9
16	20	1 RM 289, 285, 286	2#12, #12G-3/4			.9		.9
18	20	1 RM 25						



WIREWAY FIRE WALL PENETRATION DETAIL
NO SCALE



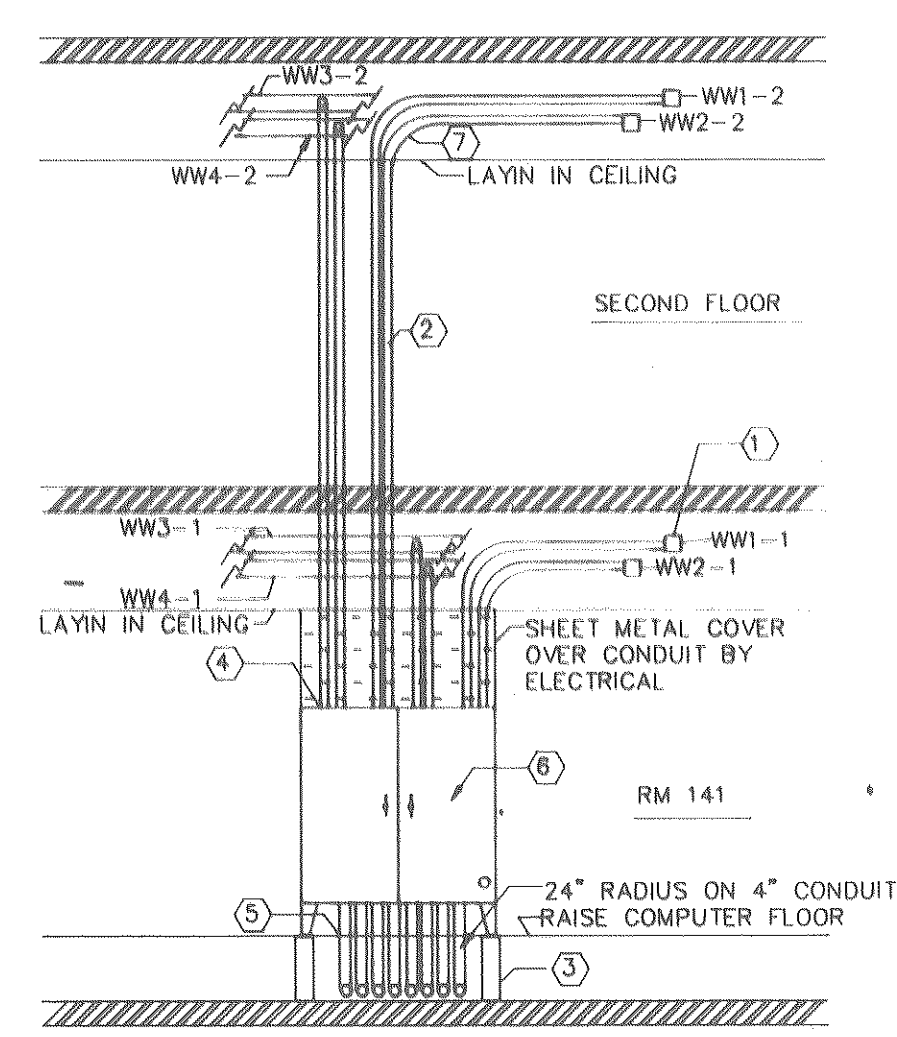
COMMUNICATIONS WIREWAY DETAIL
NO SCALE



COMMUNICATIONS FIRST FLOOR PLAN
3/32"=1'-0"

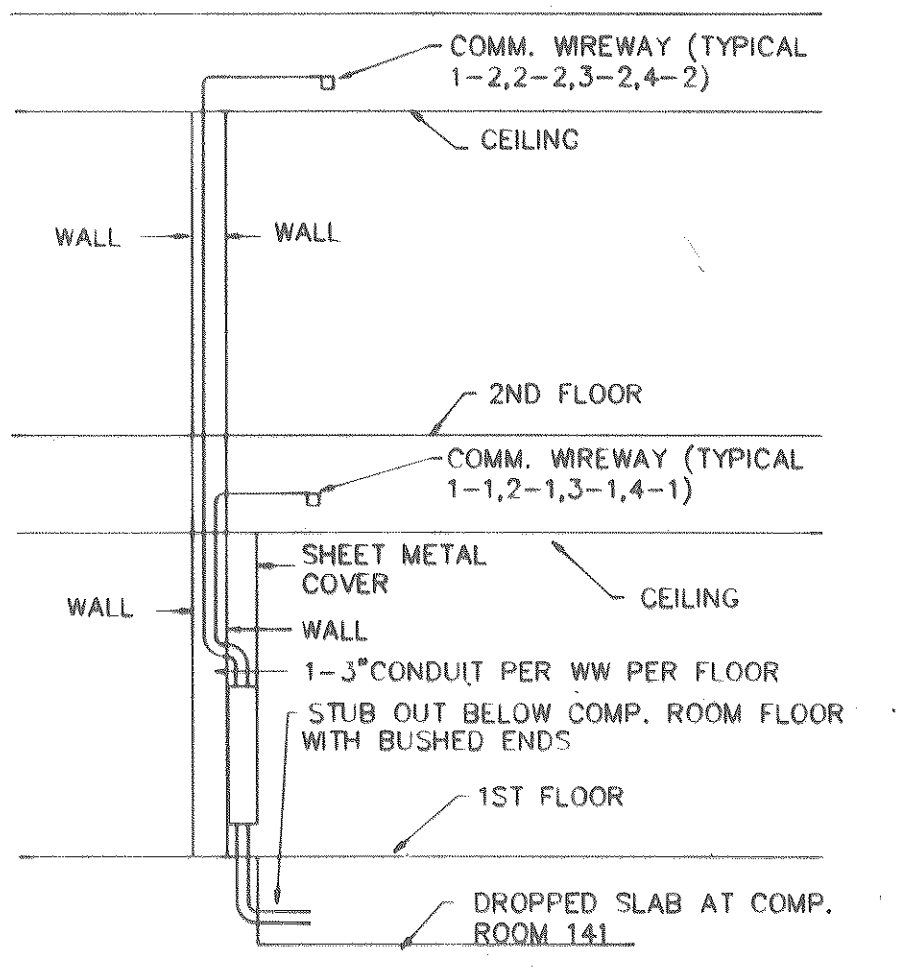
COMMUNICATIONS NOTES

- 1C. STUB UP 1" RIGID CONDUIT, WITH BUSHED END, FROM EACH TELEPHONE AND EACH COMPUTER OUTLET TO WIREWAY.
- 2C. SEE ELECTRICAL FLOOR PLANS FOR LOCATIONS OF POWER/TELEPHONE/COMPUTER FLOOR OUTLETS. STUB OUT 2-1" RIGID CONDUITS, WITH BUSHED END, FROM EACH FLOOR OUTLET TO ABOVE LAY-IN CEILING (1-1" FOR TELEPHONE & 1-1" FOR COMPUTER).
- 3C. PROVIDE CUSTOM FABRICATED JUNCTION BOXES WITH REMOVABLE BOTTOM, FOR ANGLE TURNS IN WIREWAY. SEE ELECTRICAL PLANS FOR LOCATIONS (WWJB). J.B. CONSTRUCTION TO MATCH WIREWAY IN MATERIAL AND FINISH. SECURE EACH J.B. TO BAR JOIST WITH FOUR 1/4" THREADED RODS.
- 4C. PROVIDE ALL FITTINGS, HANGERS, AND HARDWARE FOR A COMPLETE WIREWAY INSTALLATION.
- 5C. ALL WIREWAY SHALL BE INSTALLED PLUMB AND LEVEL.
- 6C. MAXIMUM NUMBER OF WIREWAY ELEVATIONS CHANGES SHALL BE ONE PER 50'. ELEVATIONS CHANGES SHALL BE MADE WITH WIREWAY FITTINGS.



ELEVATION OF COMMUNICATION PANELBOARD DETAIL
NTS

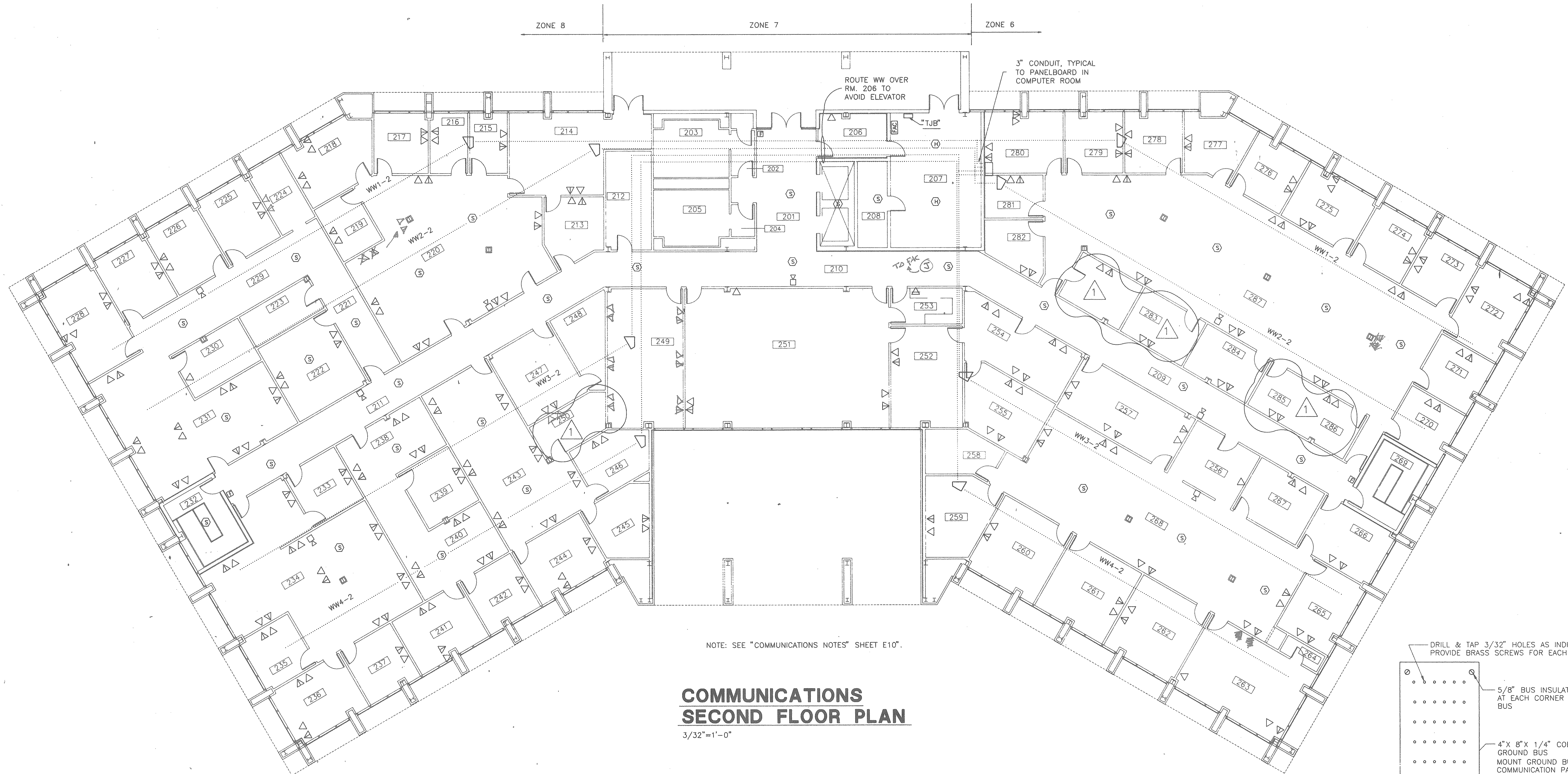
- ① 6"x6" WIREWAY, NEMA 1 ENCLOSURE, TYP
- ② CONCEAL 3" CONDUIT IN 6" BLOCK WALL ON SECOND FLOOR ONLY
- ③ 6" STEEL SUPPORT FOR PANELBOARD. SECURE SUPPORT TO FLOOR
- ④ CONDUIT TO ENTER TOP OF PANELBOARD
- ⑤ CUT FLOOR TILE TO FIT 4" CONDUIT, 1/8" MAXIMUM OVERSIZE OPENING ALLOWED. SEAL AROUND OPENING
- ⑥ COMM PANELBOARD MENA 12 ENCLOSURE SIZE 72"x72"x12". HOFFMAN CAT NO. A-72721ULP. BOLT TO WALL.
- ⑦ 18" RADIUS ON 3" CONDUIT, TYP



COMPUTER CONDUIT DETAIL
NO SCALE

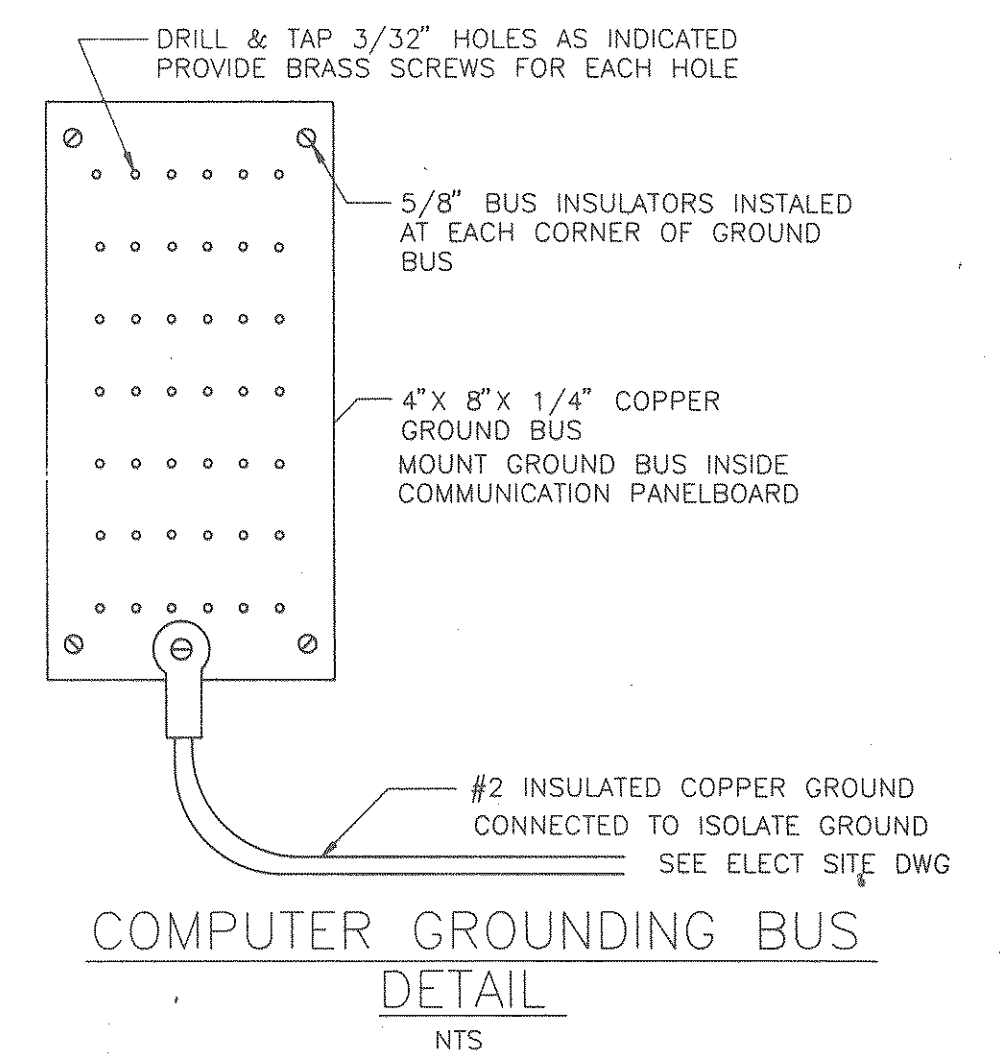
RECORD DRAWINGS
SUBCONTRACTOR: _____
GENERAL CONTRACTOR: _____
SIGNATURE IF APPLICABLE: _____
Date: 6/26/90

<p>The State of South Carolina</p>	<p>AGENCY OR INSTITUTION</p> <p>DEPARTMENT OF MENTAL RETARDATION</p>	<p>PROFESSIONAL SEAL</p> <p></p>	<p>A & E FIRM</p> <p>CARLISLE ASSOCIATES 1015 GERVAIS STREET P.O. BOX 11528 COLUMBIA, SC 29211 (803) 252-3232</p>	<p>SHEET TITLE</p> <p>COMMUNICATIONS FIRST FLOOR PLAN</p>	<p>PROJECT TITLE</p> <p>CENTRAL OFFICE BUILDING PHASE II</p>
	<p>DIVISION</p>	<p>WALL REVISIONS 2/23/89 RCH JRF</p> <p>REVISION NO. DATE BY APP.</p>	<p>A & E PROJECT NO. S75</p>	<p>DRAWN BY JRF CHECKED BY WFF FINAL APP. WFF</p>	<p>STATE PROJECT NO. J16-8933</p> <p>DRAWING NO. S75-E10</p> <p>DATE 4/1/88</p>



NOTE: SEE "COMMUNICATIONS NOTES" SHEET E10".

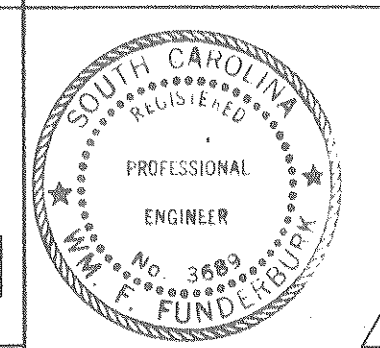
**COMMUNICATIONS
SECOND FLOOR PLAN**
3/32"=1'-0"



RECORD DRAWINGS
 SUBCONTRACTOR: _____ Date _____
 GENERAL CONTRACTOR: _____ Date _____
 GENERAL CONTRACTOR SHALL VERIFY SUBCONTRACTORS SIGNATURE IF APPLICABLE.

The State
of
South Carolina

AGENCY OR INSTITUTION
**DEPARTMENT
OF
MENTAL RETARDATION**



A & E FIRM
CARLISLE ASSOCIATES
1015 GERVAIS STREET
P.O. BOX 11528
COLUMBIA, SC 29211
(803) 252-3232
ARCHITECTS
ENGINEERS

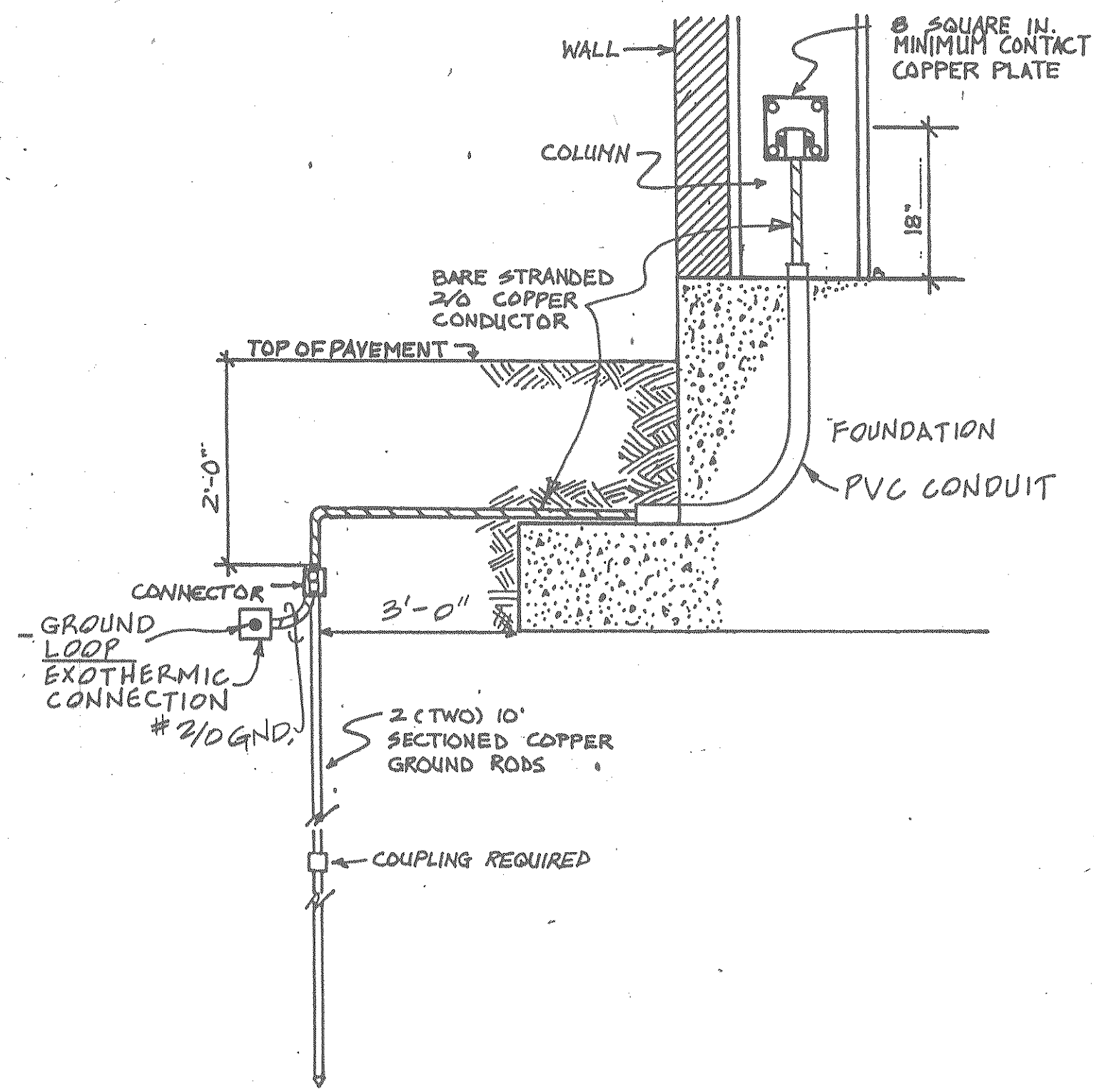
SHEET TITLE
**COMMUNICATIONS
SECOND FLOOR PLAN**
DRAWN BY JRF CHECKED BY WFF FINAL APP. WFF

PROJECT TITLE
**CENTRAL OFFICE BUILDING
PHASE II**
STATE PROJECT NO. **J16-8933** DRAWING NO. S75-E11 SHEET **E11** OF **13**
DATE 4/1/88

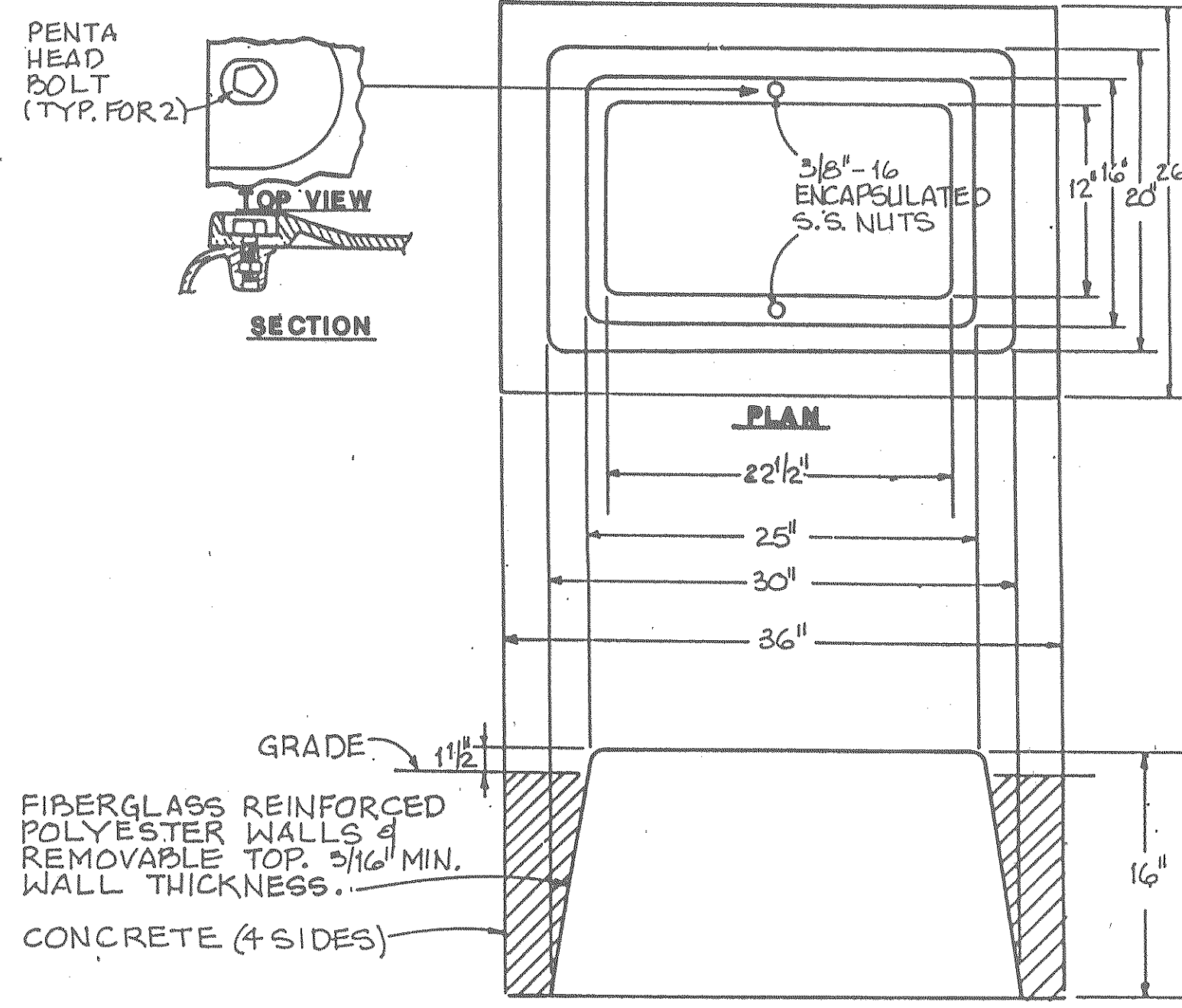
DIVISION: ELECTRICAL

WALL REVISIONS	2/23/89	RCH	JRF
REVISION NO.	DATE	BY	APP.

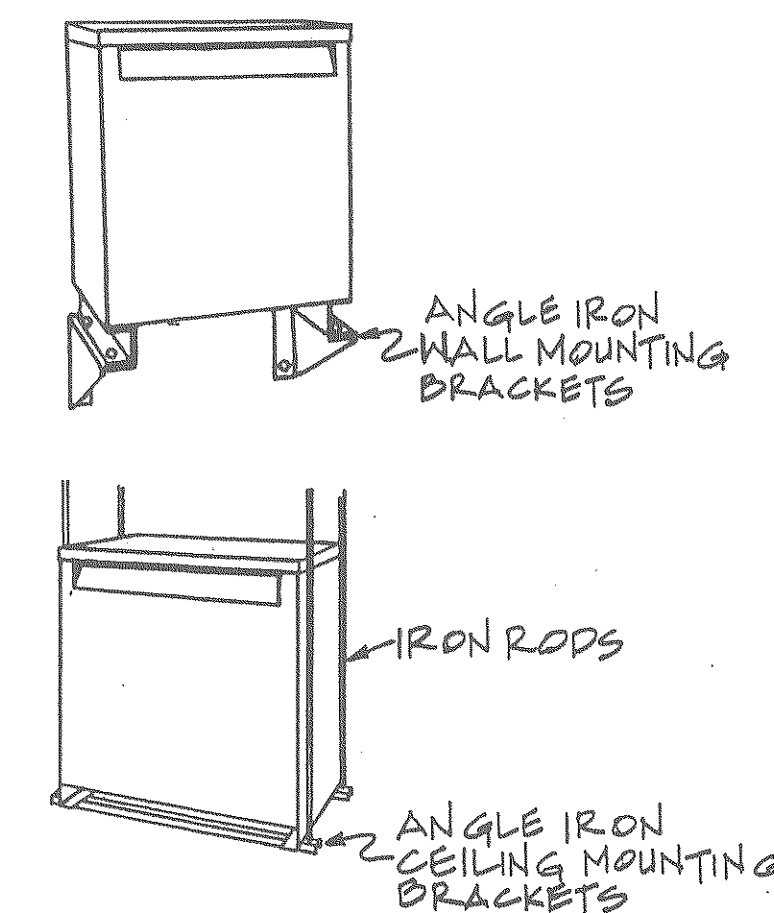
A & E PROJECT NO. S75



GROUND LOOP GROUNDING DETAIL
NTS



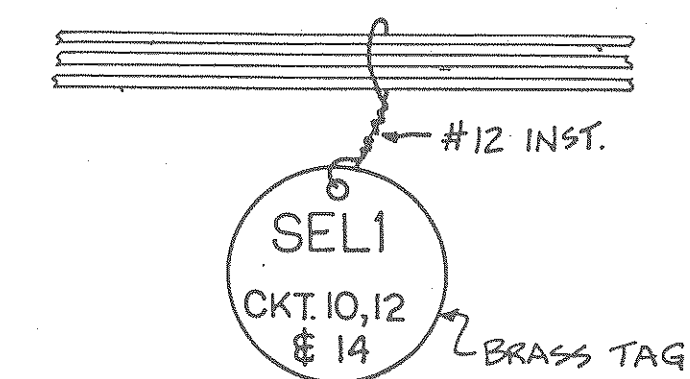
HANDHOLE DETAIL
N.T.S.



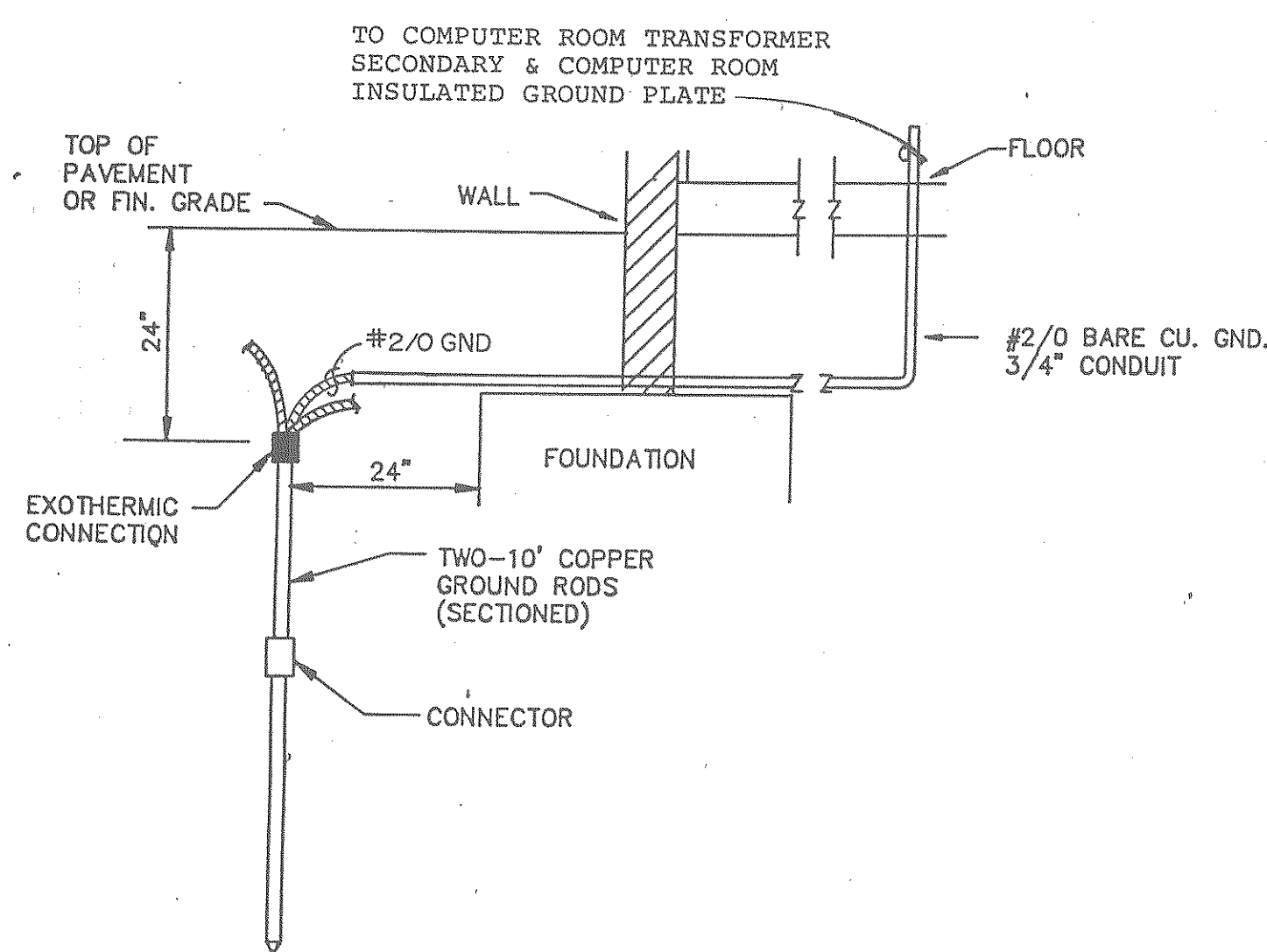
OVERHEAD TRANSFORMER INSTALLATION DETAIL
NTS

RECORD DRAWINGS

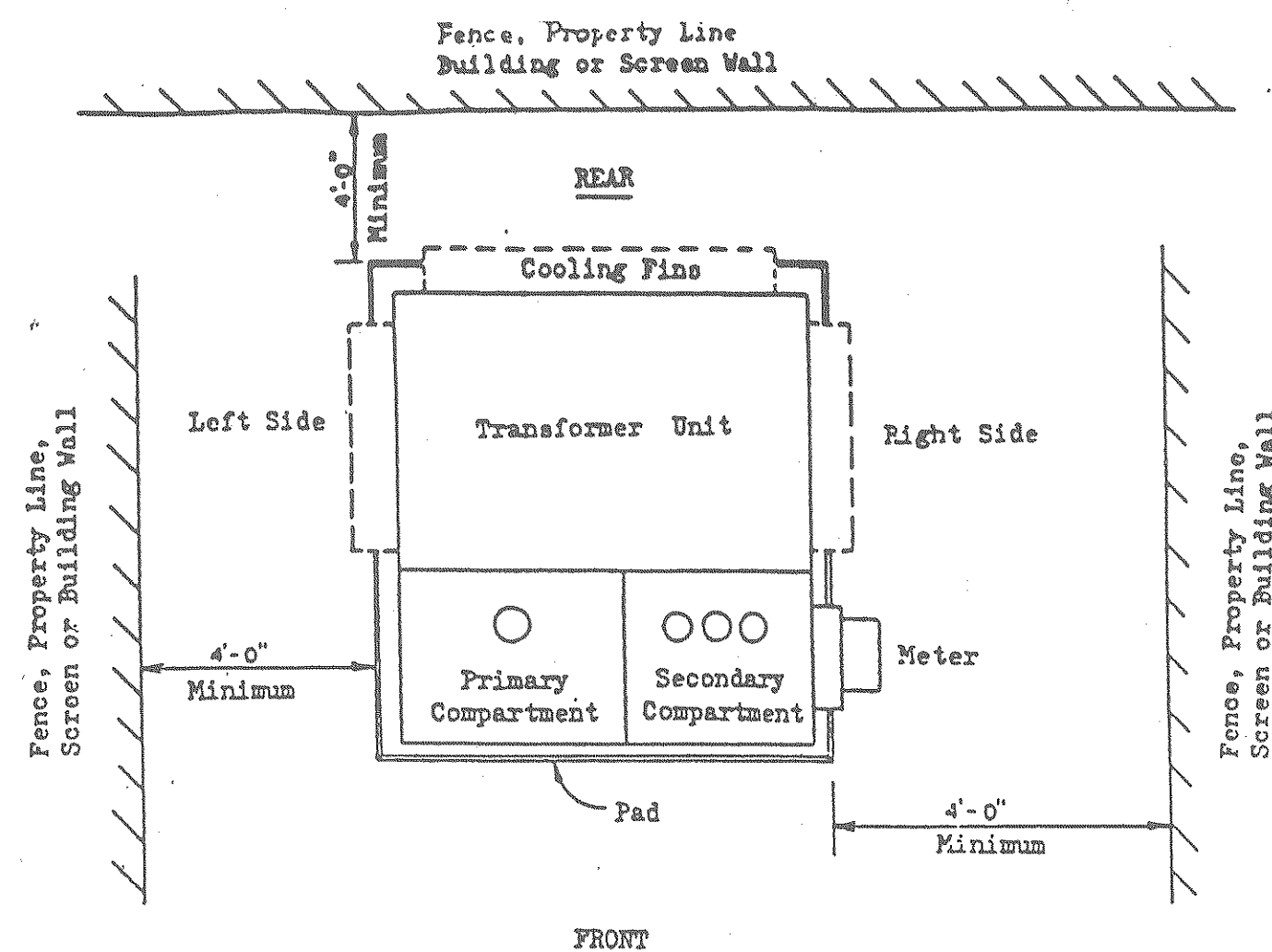
SUBCONTRACTOR: _____
 GENERAL CONTRACTOR: _____
 GENERAL CONTRACTOR SHALL VERIFY SUBCONTRACTORS SIGNATURE IF APPLICABLE.



CABLE TAG DETAIL
NTS

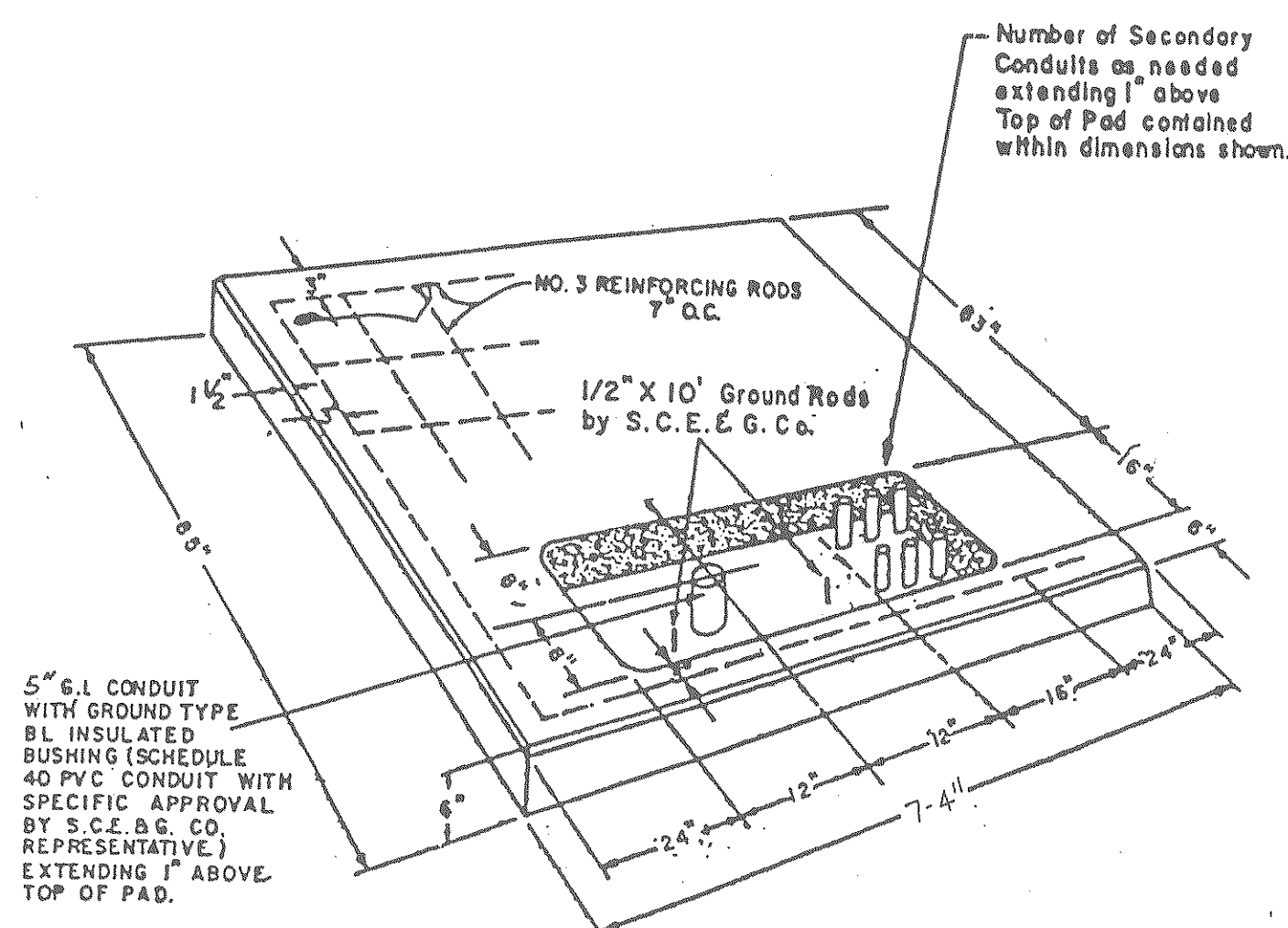


COUNTERPOISE GROUNDING DETAIL
NTS



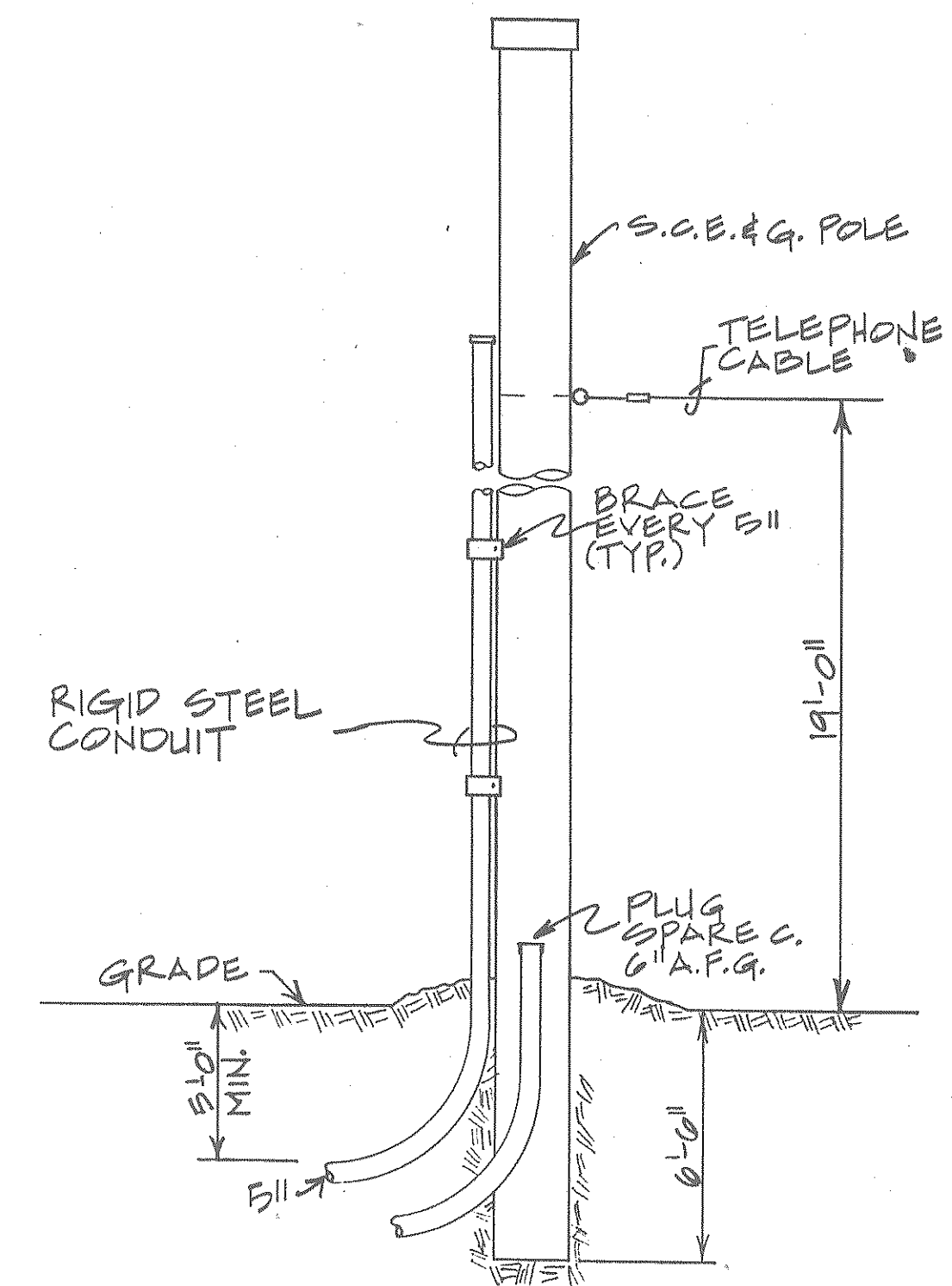
NOTE:
 FINAL PAD LOCATION AND ORIENTATION TO BE SPOTTED ON THE JOB SITE BY S.C.E.&G.CO. REPRESENTATIVE.

TRANSFORMER DETAIL
NTS



PAD MOUNT TRANSFORMER DETAIL
NTS

- NOTES:
1. FINAL LOCATION OF CONCRETE PAD TO BE SPOTTED IN THE FIELD BY S.C.E.&G.CO. COMPANY.
 2. CONCRETE SPECIFICATIONS: MIN. 28 DAY COMPRESSED STRENGTH-3500 PSI MAX. SIZE AGGREGATE-1"
 3. INSTALL TWO HOLE SECONDARY CABLE LUGS AT CONNECTION TO TRANSFORMER. BURNDY CAT. NO. YA342N.

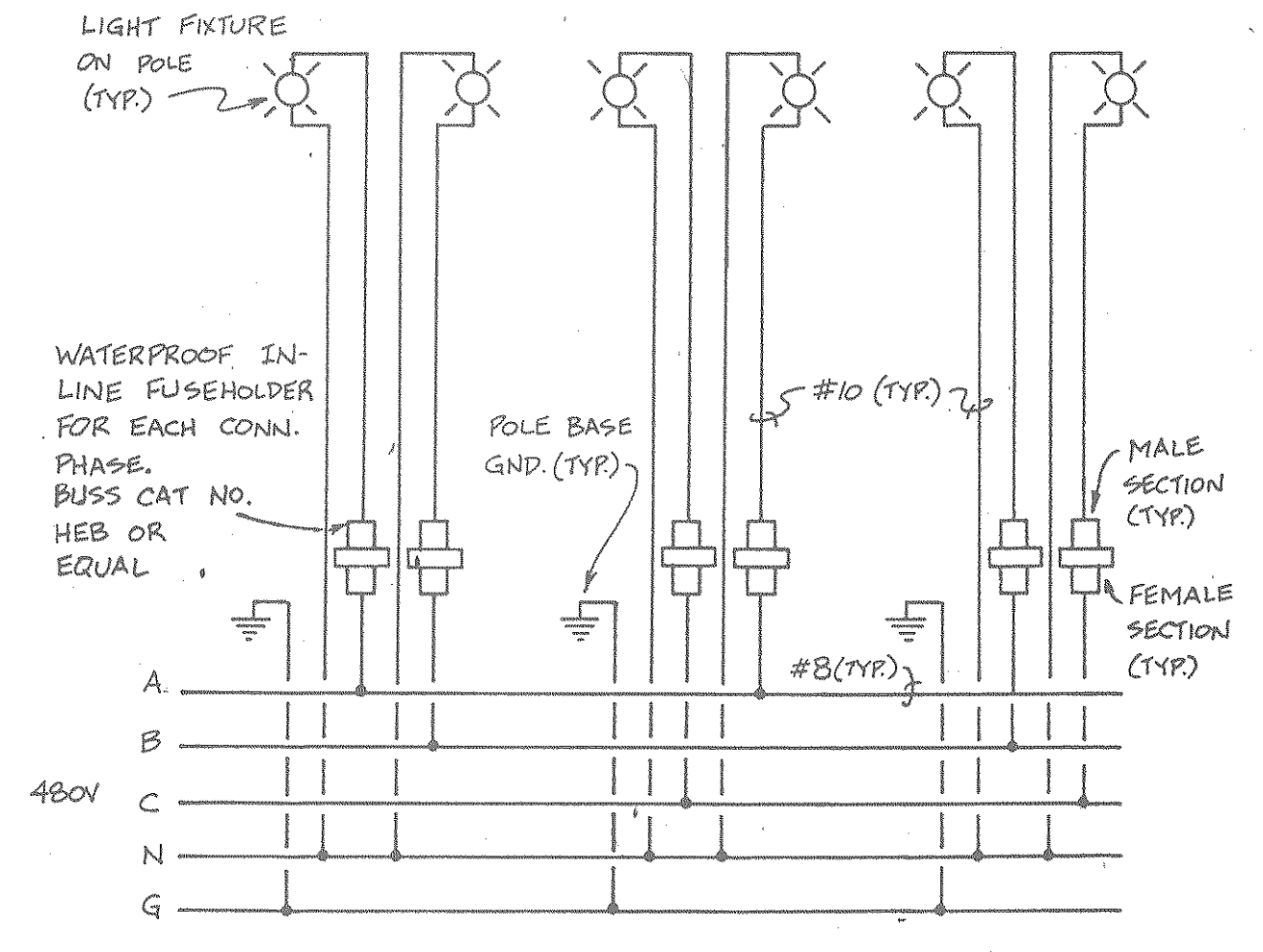


DIP POLE DETAIL
NTS

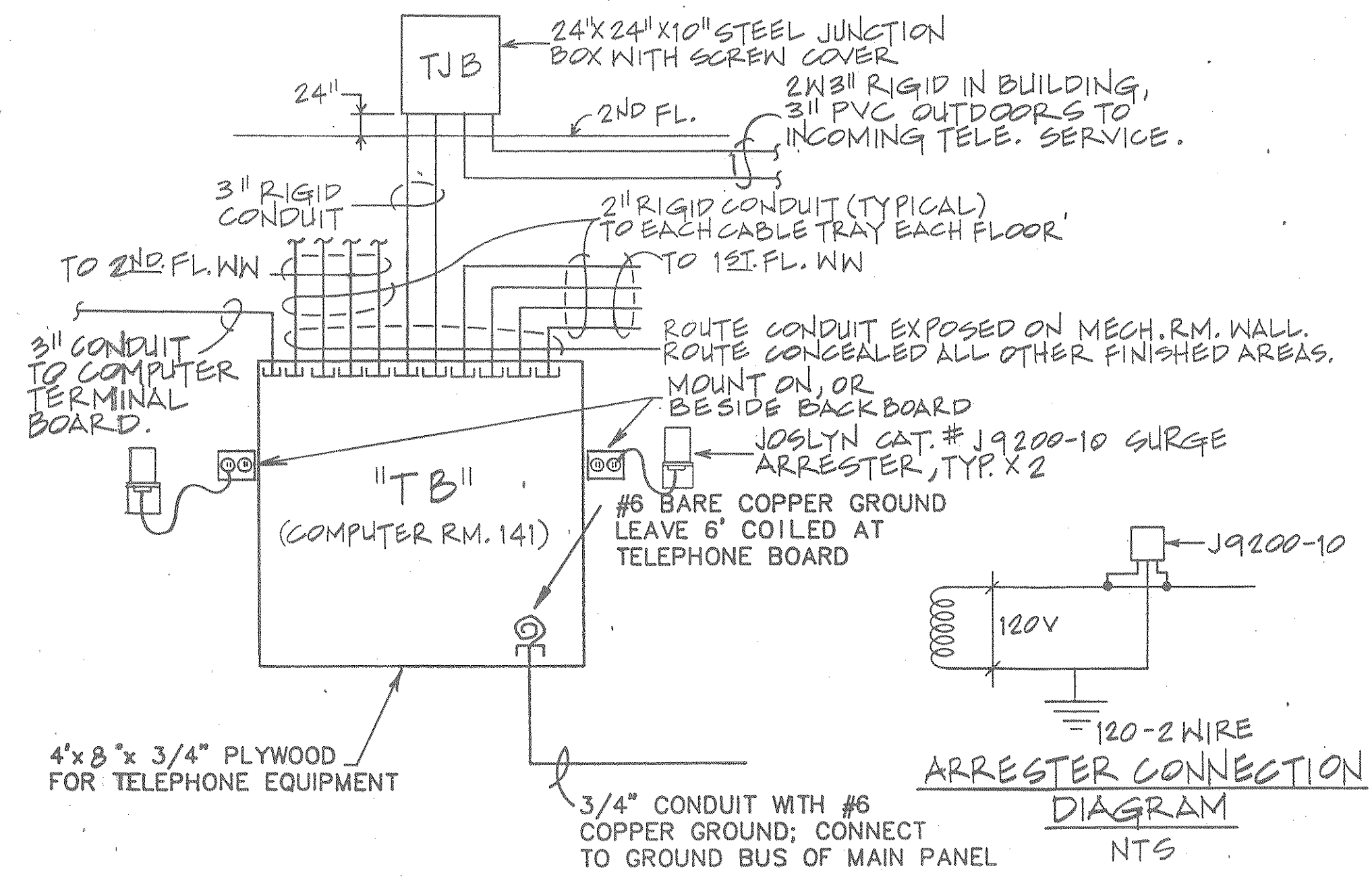
<p>The State of South Carolina</p>	<p>DEPARTMENT OF MENTAL RETARDATION</p>		<p>A & E FIRM</p> <p>CARLISLE ASSOCIATES 1015 GERVAIS STREET P.O. BOX 11528 COLUMBIA, SC 29211 (803) 252-3232</p>	<p>SHEET TITLE</p> <p>ELECTRICAL DETAILS</p>	<p>PROJECT TITLE</p> <p>CENTRAL OFFICE BUILDING PHASE II</p>

LIGHTING FIXTURE SCHEDULE

SYM	MANUFACTURER	CATALOG NO.	LAMPS	DESCRIPTION
A	METALUX LITHONIA COLUMBIA	2PGX-440S48H 2PM4GB440-32 4544-43-244	4F40LW/RS	2' X 4' RECESSED PARABOLIC TROFFER
B	METALUX LITHONIA COLUMBIA	2PGX-240S26H 2PM2GB240-32 P4-244G-43263	2F40LW/RS	2' X 4' RECESSED PARABOLIC TROFFER
C	METALUX LITHONIA COLUMBIA	2G-240A.125 2GT240AL2.125 4PS2G52242.125	2F40LW/RS	2' X 4' LENSED TROFFER
D	METALUX LITHONIA WILLIAMS	DIM240 AF-240 8222	2F40LW/RS	INDUSTRIAL FLUORESCENT
E	METALUX LITHONIA WILLIAMS	SS240-WG C-240-WG 7722-WG	2F40LW/RS	SURFACE STRIP
F	METALUX LITHONIA WILLIAMS	(3) SSS140 (3) SS140 (3) 7420	3F40LW/RS	(3) 4' STAGGERED COVE STRIPS
FB	METALUX LITHONIA WILLIAMS	(2) SS140, (1) SS130 (2) SS140, (1) SS130 (2) 7420, (1) 7410	2F40CW/RS, 1F30T12/CW/RS	(2) 4', (1) 3' STAGGERED COVE STRIP
FC	METALUX LITHONIA WILLIAMS	(2) SS140 (2) SS140 (2) 7420	2F40CW/RS	(2) 4' STAGGERED COVE STRIPS
FD	METALUX LITHONIA WILLIAMS	(2) SS140, (1) SS130 (2) SS140, (1) SS130 (2) 7420, (1) 7410	3F40LW/RS, 1F30T12/CW/RS	(3) 4', (1) 3' STAGGERED COVE STRIPS
G	HALO LITHONIA PRESCOLITE	H7600T-1600C A6BAR 1225-462	150WA21 IF	RECESSED DOWN LIGHT
H	PRESCOLITE LITHONIA	WB19 WUD	(2) 60WA19 IF	BRACKET LIGHT OVER MIRROR
L	HALO LITHONIA	M7010-750-55000C A9175MAR	175 MH/C	RECESSED DOWN LIGHT WITH POLARIZED BALLAST HARNESS PLUG & QUICK RELEASE LATCH
M	HALO LITHONIA PRESCOLITE	H7896-9840C A913PAR PBX-T094S	(2) 13WPL	RECESSED DOWN LIGHT
N	HALO PRESCOLITE	H2471-AL CF-28	150WA21 IF	BRACKET LIGHT
Q	HALO LITHONIA PRESCOLITE	H7602T-1610C DW6BAR 1287-936	150A21 IF	WALL WASHER
SA	CUSTOM LGT DEVO GE	S22-BZ-175MH-277-BZ-1R PS175MH C22S17MOH3A5DB (POLE) AR143S48A	175W MH/C	22" BRONZE SPHERE 14' ALUM. POLE (BRONZE FINISH ROUND)
SB	CROUSE HIND LITHONIA GE	(2) RCL40MW23D (2) OAL062 POLE:SSA6x30WX-V-F-M2 (2) KAA400M SP-12 POLE:A32-6830-DM28 D40S40MOH1GMC3DB POLE:CS92H65X WITH VIBRATION DAMPER CA2RS14J-1-324 CL1527BZ3	(2) 250W MH/C	AREA LUMINAIRE WITH ARM & 30' SQ ALUM. POLE WITH BRONZE FINISH. VIBRATION ISOLATOR
SC	HALO DEVINE	H2925PL (120 V) BDC02 7PL BZ	7WPL	18" ABOVE ADJACENT WALK FIT BRICK COURSE
SD	CUSTOM LGT DEVINE TRIMBLE	CLS-100MH-OPAL ACRYLIC CAB MH 100 HOUTH2758-100MH-277-BZ-TR	100WMH/C	42" HIGH BOLLARD
X	SILTRON LITHONIA DUAL-LITE	UX-ESC-SR-B-CY XS1RELN CSRNB-BEP	FURNISHED	UNIVERSAL MOUNT
XA	SILTRON LITHONIA DUAL-LITE	UX-ESC-DR-B-C ES2RELN CDRNB-BEP	FURNISHED	UNIVERSAL MOUNT



SITE LIGHTING CONNECTION DIAGRAM
NTS



TELEPHONE RISER DIAGRAM
NOT TO SCALE

SAFETY SWITCH SCHEDULE

SYMBOL	AMP	POLES
S-1	30	2
S-2	30	3
S-3	30	4WSN
S-4	60	2
S-5	60	3
S-6	60	4WSN
S-7	100	2
S-8	100	3
S-9	100	4WSN
S-10	200	2
S-11	200	3

RECORD DRAWINGS

SUBCONTRACTOR: _____ Signature _____ Date _____
 GENERAL CONTRACTOR: _____ Signature _____ Date _____
 GENERAL CONTRACTOR SHALL VERIFY SUBCONTRACTORS SIGNATURE IF APPLICABLE.

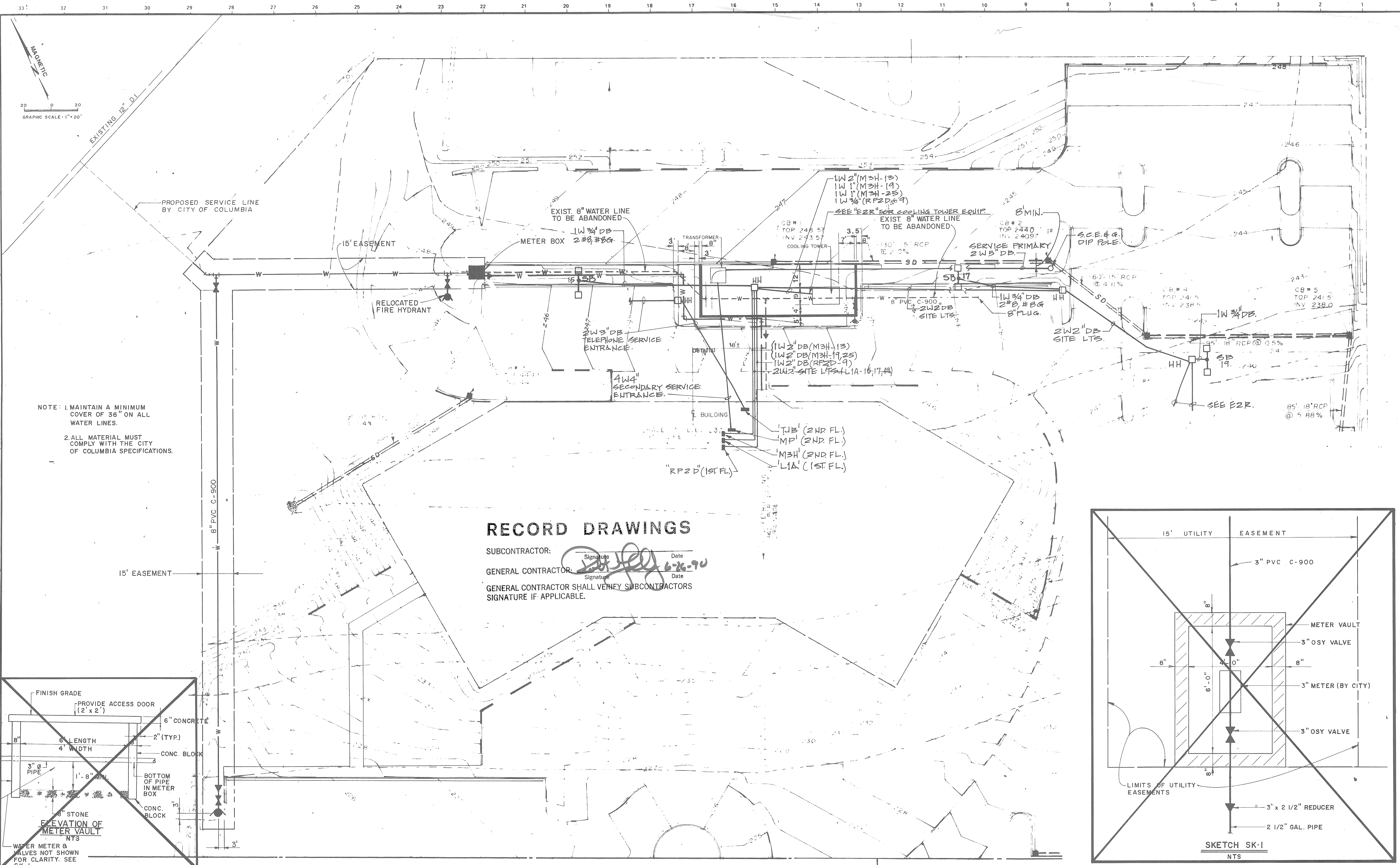
SAFETY SWITCH NOTES:

- ALL SWITCHES FUSIBLE UNLESS NOTED OTHERWISE. PROVIDE FUSES TO SUIT LOAD.
- ENCLOSURE NEMA 3R OUTDOOR AND IN WET LOCATIONS, NEMA 1 ELSEWHERE.

NOTES:

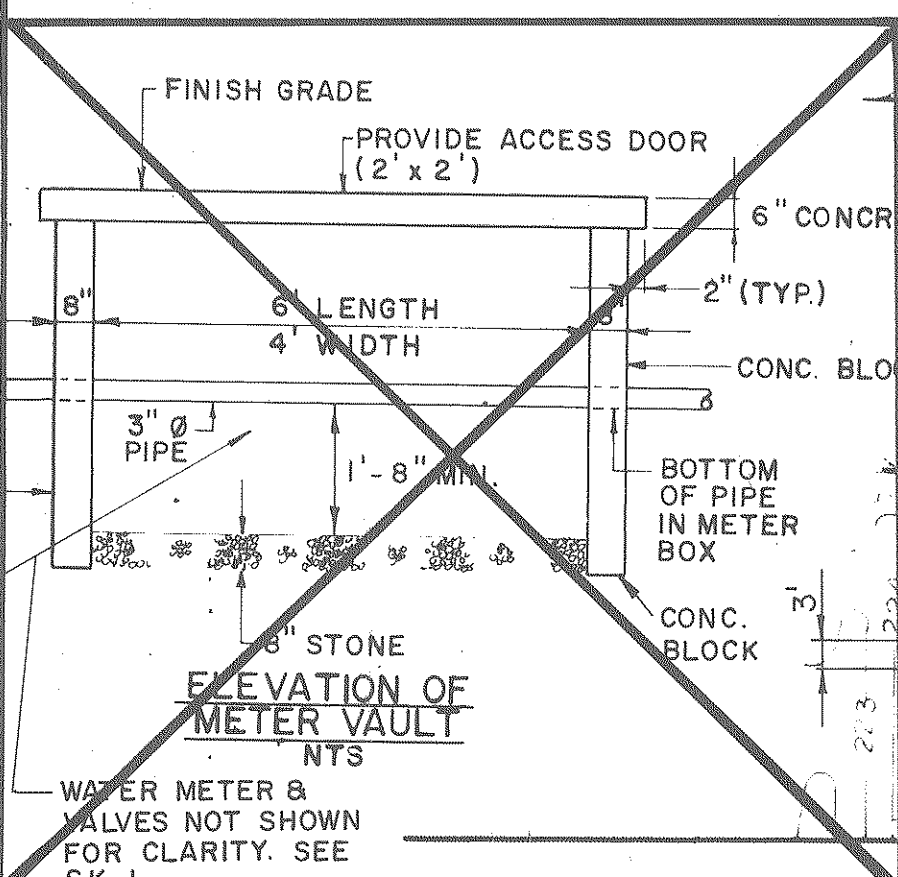
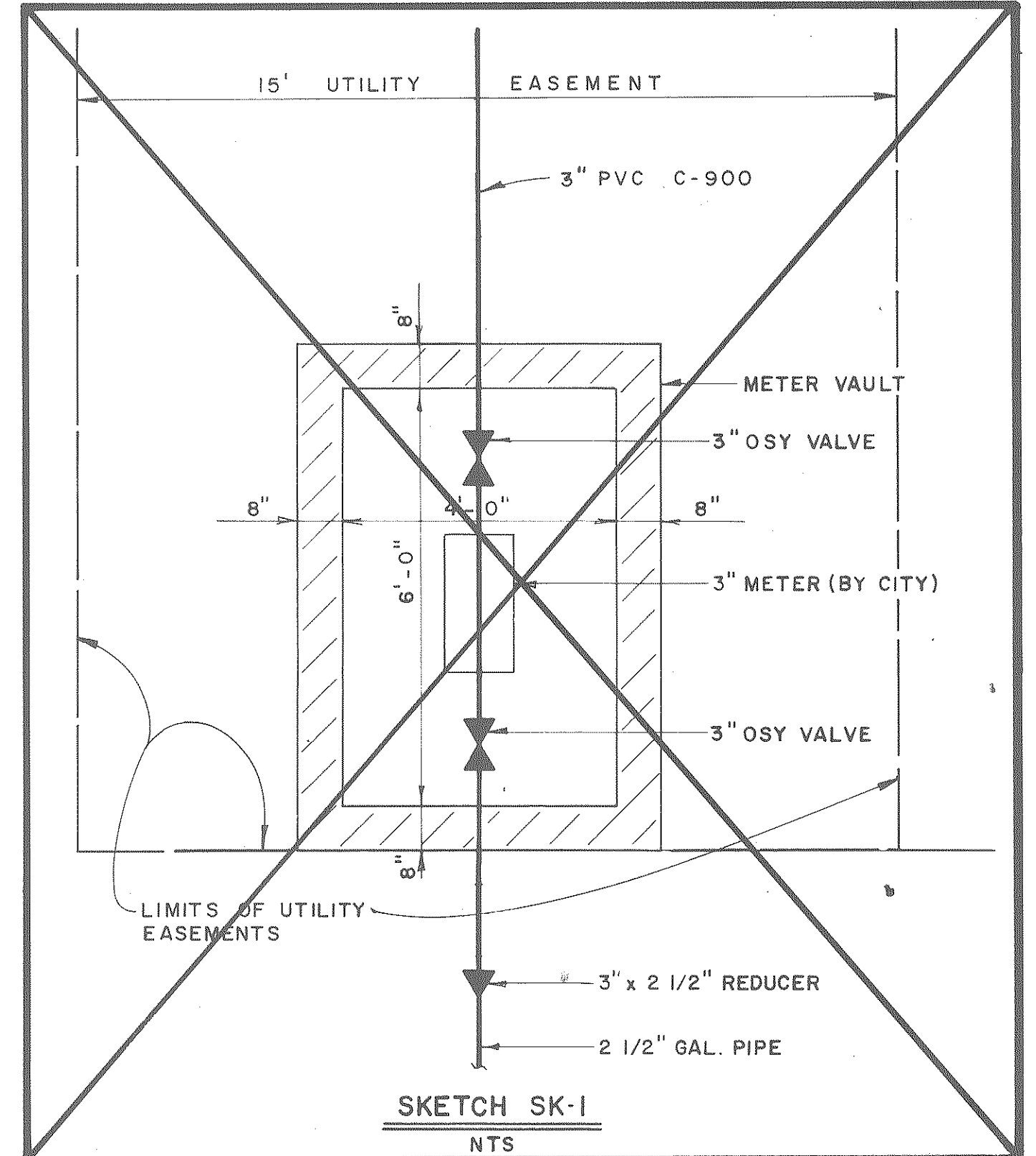
- NL SUBSCRIPT = NIGHT LIGHT, WIRE HOT
- ALL FLUORESCENT LAMPS & BALLAST SHALL BE ENERGY SAVING TYPE.
- FLUORESCENT EMERGENCY BATTERY UNIT-SILTRON UP40, LITHONIA P5500

<p>The State of South Carolina</p>	<p>DEPARTMENT OF MENTAL RETARDATION</p>		<p>CARLISLE ASSOCIATES 1015 GERVAIS STREET P.O. BOX 11528 COLUMBIA, SC 29211 (803) 252-3232</p>	<p>SHEET TITLE</p> <p>ELECTRICAL DETAILS AND SCHEDULES</p>	<p>PROJECT TITLE</p> <p>CENTRAL OFFICE BUILDING PHASE II</p>
<p>DIVISION: ELECTRICAL</p>			<p>REVISION NO. DATE BY APP.</p>	<p>A & E PROJECT NO. S75</p>	<p>STATE PROJECT NO. J16-8933</p>
<p>DATE 4/1/88</p>			<p>DRAWN BY RCH</p>	<p>CHECKED BY WFF</p>	<p>FINAL APP. WFF</p>



RECORD DRAWINGS

SUBCONTRACTOR: _____
 GENERAL CONTRACTOR: *[Signature]* 6-26-90
 GENERAL CONTRACTOR SHALL VERIFY SUBCONTRACTORS SIGNATURE IF APPLICABLE.



	AGENCY OR INSTITUTION	PROFESSIONAL SEAL	A & E FIRM	SHEET TITLE	PROJECT TITLE
	 DEPARTMENT OF MENTAL RETARDATION		 CARLISLE ASSOCIATES P.O. BOX 11528 COLUMBIA, S.C. 29211 ARCHITECTS & ENGINEERS	ELECTRICAL UTILITY PLAN	PHASE I CENTRAL OFFICE BUILDING SITE IMPROVEMENTS
	DIVISION		REVISION NO. DATE BY APP A & E PROJECT NO S75	DRAWN BY JRF/MH CHECKED BY JRF FINAL APP T.S.	STATE PROJECT NO J16-8933 DRAWING NO S75-441 DATE MAY 2, 1989 SHEET EU 1