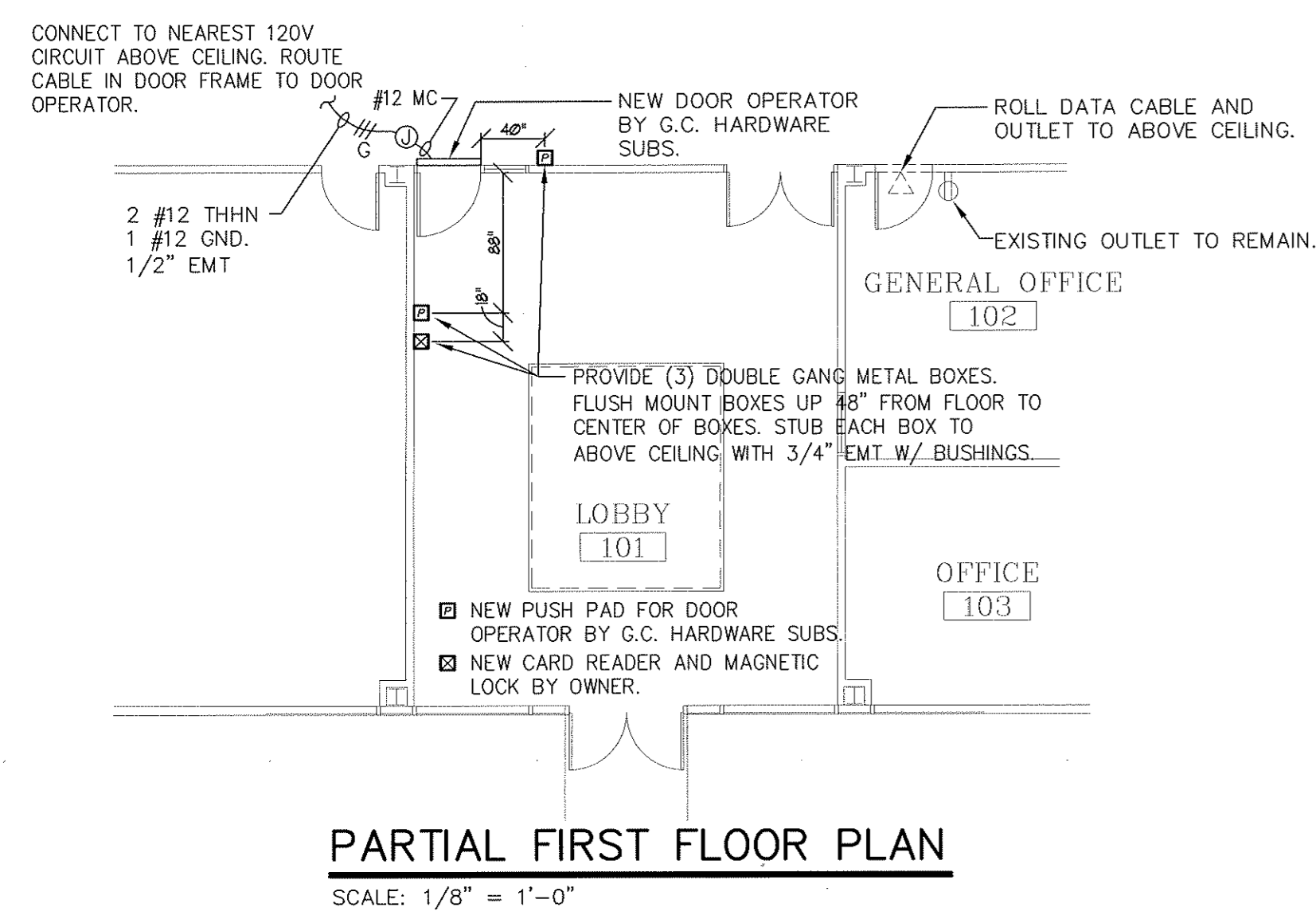
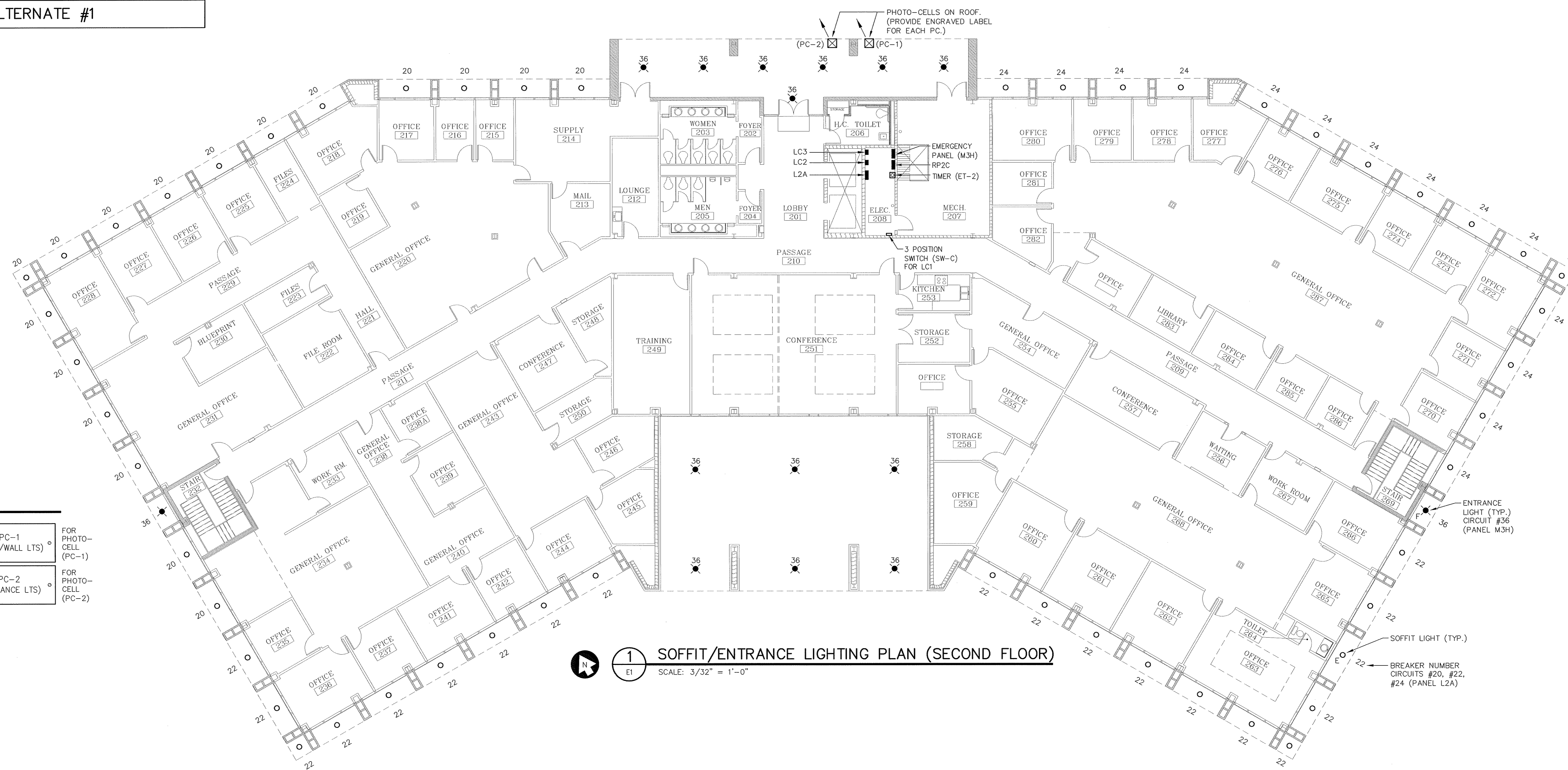


These drawings are the property of Watson Tate Savory Lollo Architecture and may not be used in whole or in part without written consent of the architects and any infringement is subject to legal action.



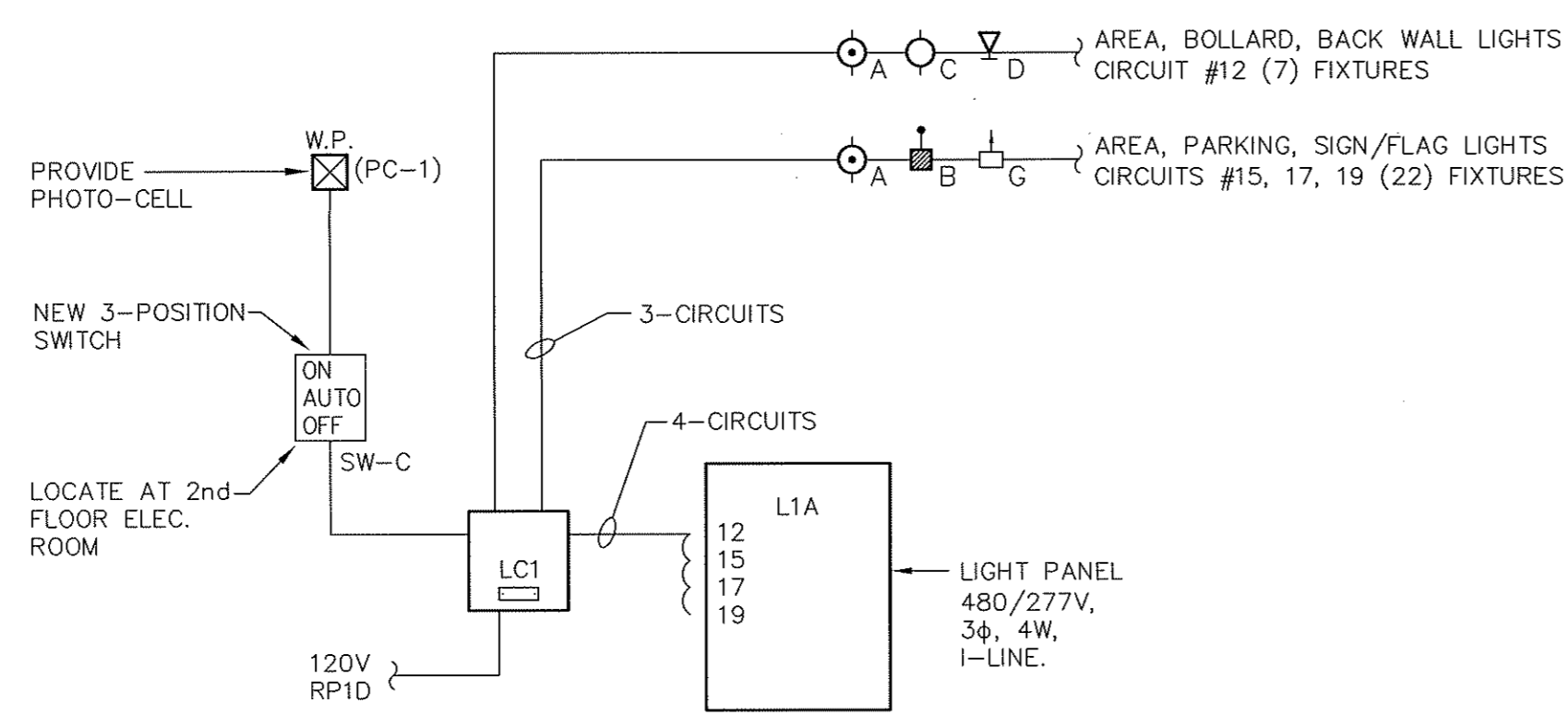
ELECTRICAL WORK FOR ALTERNATE #1



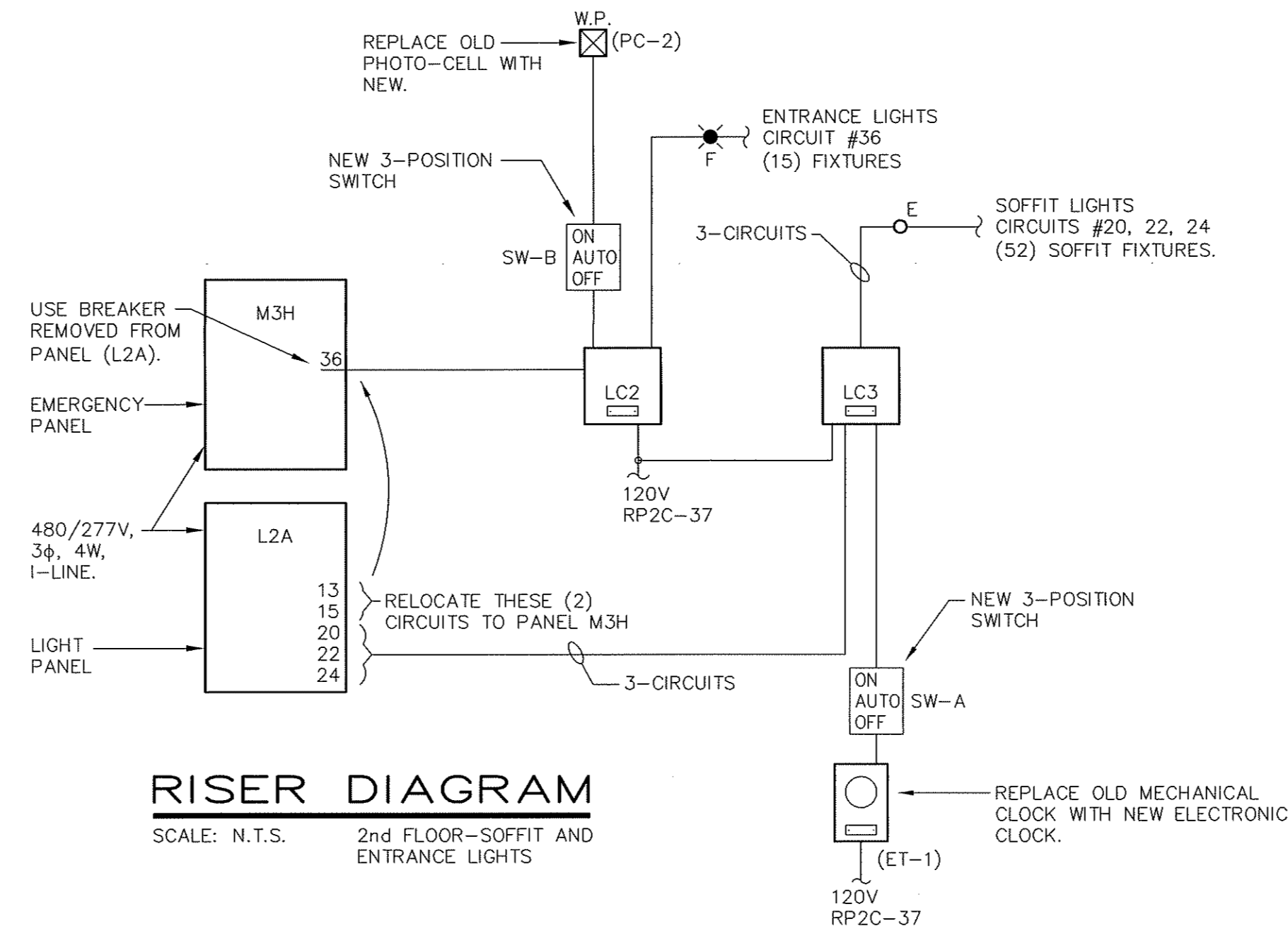
LABELS

- LC-1 FOR LCI AND SW-C
- LC-2 FOR LC2 AND SW-B
- LC-3 FOR LC3, SW-A, AND ET-1
- ON AUTO OFF
- YARD AND BACK WALL LIGHTS
- OUTSIDE ENTRANCE LIGHTS
- SOFFIT LIGHTS
- PC-1 (YARD/WALL LTS)
- PC-2 (ENTRANCE LTS)
- PHOTO-CELL (PC-1)
- PHOTO-CELL (PC-2)
- FOR SW-A SW-B SW-C
- OUTDOOR QUALITY ENGRAVED PLASTIC LABELS. MOUNTED WITH #6 S.S. SCREWS. 1/4\"/>

ELEC. ROOM 1st FLOOR
SCALE: N.T.S.



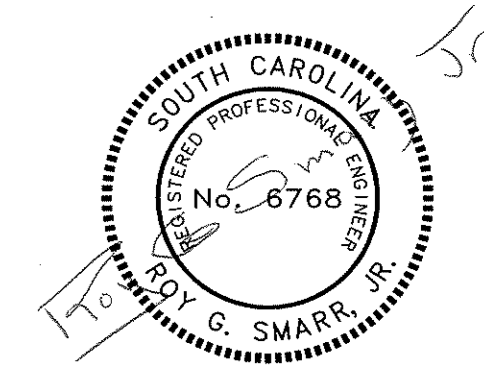
RISER DIAGRAM
SCALE: N.T.S. 1st FLOOR-YARD AND BACK WALL LIGHTS



RISER DIAGRAM
SCALE: N.T.S. 2nd FLOOR-SOFFIT AND ENTRANCE LIGHTS

- SCOPE**
- RETROFIT/REPLACE (99) OUTSIDE LIGHT FIXTURES WITH NEW LED FIXTURES/LAMPS.
 - RE-WIRE (2) CIRCUITS TO RECEIVE POWER FROM EMERGENCY GENERATOR PANEL.
 - PROVIDE (1) NEW ELECTRONIC TIME CLOCKS AND (2) PHOTO-CELLS TO REPLACE OLD.
 - PROVIDE (ON-OFF-AUTO) SWITCHES FOR (3) EXISTING LIGHTING CONTACTORS.

- EQUIPMENT**
- ELECTRONIC TIME CLOCK: INTERMATIC NO. ET103C 120V, DPST, 24-HOUR ELECTRONIC TIMER WITH BATTERY BACKUP.
 - PHOTO-CONTROLLER (W.P.) 15A, 120V. INTERMATIC # K4121C



Project Number: 1023

Date: 7 NOVEMBER 2011

Revisions:

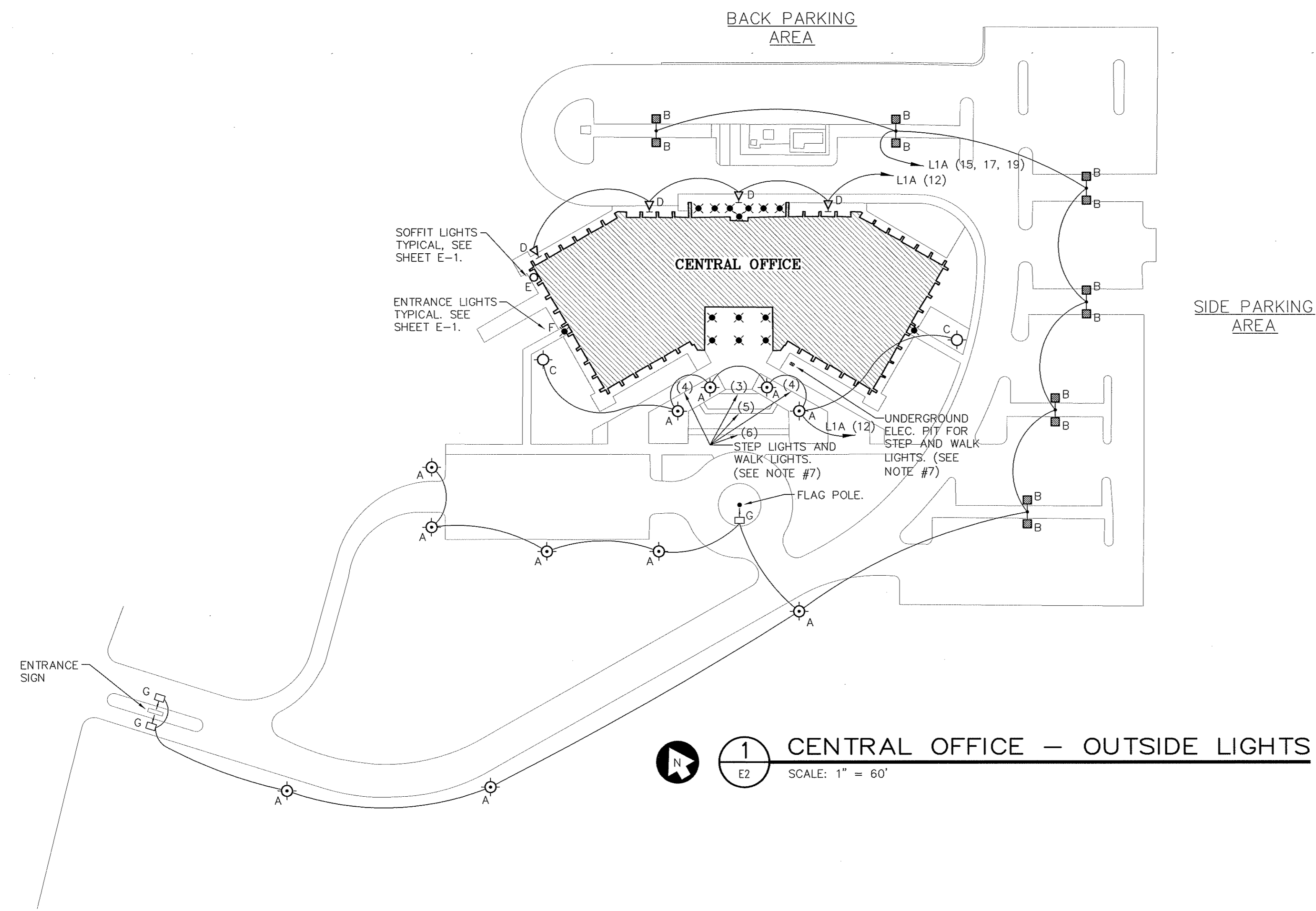
Outside Lights (Soffit/Entrance Lights and Riser)

E1

E1-AND E-2 SOFFIT LIGHTING PLANS. 11/14/2011 2:49:51 PM

These drawings are the property of Watson Tate Savory Lollo Architecture and may not be used in whole or in part without written consent of the architects and any infringement is subject to legal action.

E1-AND E-2 SOFFIT LIGHTING PLANS 11/14/2011 11:18:29 PM



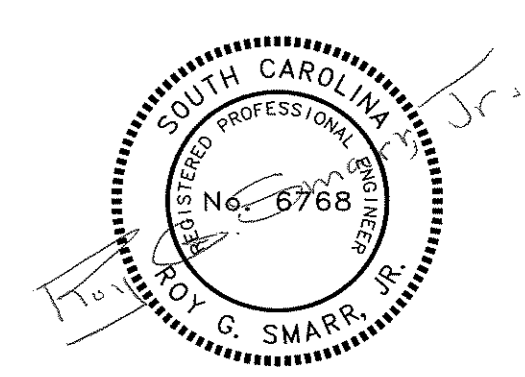
- ⊙ B PARKING POLE LIGHTS
 - ✱ F ENTRANCE LIGHTS (✱)
 - ⊙ A AREA POLE LIGHTS
 - ⊙ C BOLLARD LIGHTS
 - ⊙ G SIGN-FLAG LIGHTS
 - ∇ D WALL FLOOD LIGHTS
 - E SOFFIT LIGHTS
 - * ENTRANCE LIGHTS ARE BACKED-UP BY EMERGENCY GENERATOR.
- } THESE FIXTURES CONTROLLED BY PHOTO-CELL. (DUST TO DAWN)
- } THESE FIXTURES CONTROLLED BY TIME CLOCK. (SEE NOTE #16)

1 **CENTRAL OFFICE – OUTSIDE LIGHTS**
E2 SCALE: 1" = 60'

* QUANTITY	SYMBOL	DESCRIPTION	MFG.	CAT. NO.	SPECIFICATION	REMARKS	SPARE LAMPS/FIXTURES
11	⊙ A	AREA POLE LIGHT	SUN VALLEY (SIGMA)	SI62-V50-64LED-NW-277V-PT-(RAL-8019T)	LED, 64W, 4100K, 18" DIA. FIXTURE W/ LAMPS	REPLACE OLD FIXTURE W/ NEW	0
12	⊙ B	PARKING POLE LIGHT	ELUMENUS	ELNL-RL2R084A2	LED, 184W, 5500K, 16,700 LUMENS, FIXTURE W/ LAMPS	REPLACE OLD FIXTURE W/ NEW	2
2	⊙ C	BOLLARD LIGHT	-	ELNL-PTLR-15W, 216	LED, 15W, WW, 1400 LUMENS, LAMP	RETROFIT (SEE NOTE #11)	2
4	∇ D	BACK WALL FLOOD LIGHT	-	ELNL-BY2P084,84	LED, 180W, 5500K, 15990 LUMENS, FIXTURE W/ LAMPS AND SWIVEL BRACKET	REPLACE OLD FIXTURE W/ NEW (SEE NOTE #12)	2
52	○ E	SOFFIT LIGHT	-	ELNL-PAR30-21W-450	LED, 21W, 4500K, LAMP	RETROFIT (SEE NOTE #13)	10
15	✱ F	ENTRANCE LIGHT	-	ELNL-PAR38-36W-450	LED, 36W, 4500K, 2300 LUMENS, LAMP	RETROFIT (SEE NOTE #14)	4
3	⊙ G	SIGN AND FLAG LIGHT	-	ELNL-BY2P042,42	LED, 90W, 5500K, 8000 LUMENS, FIXTURE W/ LAMPS AND SWIVEL BRACKET	REPLACE OLD FIXTURE W/ NEW (SEE NOTE #15)	1
8	-	WALK LIGHT	-	-	-	BLANK WITH S.S. COVER PLATE (SEE NOTE #7)	-
28	-	STEP LIGHT	-	-	-	BLANK WITH S.S. COVER PLATE (SEE NOTE #7)	-

- * DOES NOT INCLUDE SPARES
- LIGHT NOTES:**
- ALL LIGHTS ARE 277V. EXISTING METAL HALIDE LAMPS HAVE MOGUL BASES. NEW LED LAMPS (WHERE APPLICABLE) TO BE SUPPLIED WITH ADAPTERS TO FIT EXISTING MOGUL SOCKETS.
 - SUN VALLEY FIXTURES ARE AVAILABLE FROM SCHNEIDER CO., COLUMBIA, S.C. TOM ELDER, 803-513-5082.
 - ELUMENUS FIXTURES AREA AVAILABLE FROM ELUMENUS SOUTHEAST LLC, SUMMERVILLE, S.C. MICHAEL DREW, 843-695-1559, CELL 843-801-2784.
 - LIGHTING EQUIPMENT BY OTHER MFG'S MAY BE SUBSTITUTED IF APPROVED BY ENGINEER.
 - ALL LED LAMPS AND FIXTURES W/ LAMPS TO BE WARRANTED FOR MINIMUM OF 50,000 HOURS. LUMEN OUTPUT TO BE MAINTAINED AT MINIMUM OF 75% OF INITIAL LUMENS THROUGH-OUT WARRANTY PERIOD. OUTAGE OF INDIVIDUAL LEDS PER LAMP/FIXTURE NOT TO EXCEED 5% OF TOTAL LEDS.
 - FIXTURES TO HAVE DIE-CAST ALUMINUM HOUSINGS WITH POWDER COAT BRONZE FINISH AND TEMPERED GLASS LENSES WHERE APPLICABLE.
 - CRI FOR ALL LIGHTS TO BE MINIMUM OF 80.
 - POWER FACTOR ≥ 0.90.
 - CLEAN ALL OLD FIXTURES, REFLECTORS, AND GLASS LENSES THAT WILL BE RE-USED.
 - CLEAN ALL SOCKETS WITH CONTACT CLEANER AND LUBRICATE WITH ELEC. GREASE.

- NOTES**
1. ALL WORK TO BE PER 2011 NEC.
 2. ALL EQUIPMENT AND MATERIALS TO BE COMMERCIAL GRADE AND U.L. LISTED AS APPLICABLE. FIXTURES EXPOSED TO RAIN TO BE WET LABELED.
 3. AS-BUILT DRAWINGS OF EXISTING CIRCUITS, ETC. ARE AVAILABLE UPON REQUEST. CONTRACTOR SHOULD VISIT SITE TO HELP DETERMINE EXISTING CONDITIONS.
 4. ANY NEW UNDERGROUND CIRCUITS TO BE IN PVC. INSIDE WORK TO BE EMT.
 5. NEW WIRING TO BE COPPER TYPE THHN.
 6. AT COMPLETION, SUPPLY AS-BUILT DRAWINGS.
 7. DISCONNECT ALL WALK AND STEP LIGHTS. REMOVE LOW VOLTAGE TRANSFORMER IN PIT. CAP ALL FIXTURES WITH S.S. COVERS AND SEAL BACK SIDES OF COVERS WITH SILICON RUBBER.
 8. UPDATE ALL PANELS DIRECTORIES AND LABELS ASSOCIATED WITH THIS JOB.
 9. LC1, LC2, LC3 ARE EXISTING 20A, 4 POLE, 120V COIL LIGHTING CONTACTORS.
 10. APPLY NOLOX TO ALL CONNECTIONS.
 11. REMOVE BALLAST AND WIRE TO SOCKET.
 12. RE-USE WALL BRACKET.
 13. REMOVE BALLAST AND WIRE TO SOCKET.
 14. REMOVE BALLAST AND WIRE TO SOCKET FOR ALL EXCEPT (7) FLUORESCENT FIXTURES AT BACK ENTRANCE (PROVIDE NEW CANS FOR THESE FIXTURES).
 15. RE-USE GROUND BRACKET.
 16. SET TIME CLOCK TO TURN LIGHTS ON AT 5:30PM AND OFF AT 10PM (EACH DAY). OWNER WILL ADJUST FOR SEASONS, ETC.
 17. CONTRACTOR TO SUPPLY ALL HARDWARE, ADAPTER, BRACKETS, SOCKETS, ETC. NECESSARY FOR FIXTURE INSTALLATIONS.
 18. CONTRACTOR TO VISIT SITE TO DETERMINE EXISTING CONDITIONS. NEW SOFFIT WILL BE ELEVATED APP. 1/2". BRACKETS FOR SOFFIT LIGHT CANS MUST BE ADJUSTED SO RIMS OF CANS WILL MATCH NEW SOFFIT. ALL WORK TO BE FULLY COORDINATED WITH SOFFIT REPLACEMENT CONTRACTOR AND A/E.



Project Number: 1023
Date: 7 NOVEMBER 2011
Revisions:

Outside Lights
(Site Plan and Riser)